

A modern bathroom scene featuring a shower with a rainfall showerhead, a bidet, and a stone on a ledge. The shower is on the right, with water spraying from a large showerhead and a handheld showerhead. The bidet is in the center, and a stone is on a ledge in the foreground. The walls are made of light-colored stone tiles, and the floor is dark wood.

AQUATOP

LUXURY BATHROOMS &
KITCHENS



ABOUT US



AQUATOP HISTORY

We are one of Egypt's leading interior finishing firms, specializing in luxury bathrooms, kitchens, and health/wellness spaces.

Established in 1991, it is our mission to deliver creative design concepts combined with innovative functionality to one of the most intimate areas of your home.

We bring the world's most internationally renowned sanitary ware brands to furnish hotels, real estate developments, and private homes in Egypt.

We are also committed to providing an unmatched after sales service by offering installation, technical and maintenance support to ensure the highest levels of customer satisfaction and client well-being.



OUR PROJECTS



ST REGIS
CAIRO



OLD CATARACT
ASWAN
Depuis 1899



Hilton
HOTELS & RESORTS
Marsa Alam



SHERATON
EST. 1937
Cairo



THE NILE RITZ-CARLTON



Cairo



Hilton
HOTELS & RESORTS
Sharm El-Sheikh



SHERATON
EST. 1937
Soma Bay



marassi



Nile City



Mena House



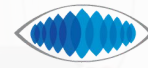
SONESTA
Nasr City Tower &
Casino



INTERCONTINENTAL
CAIRO CITYSTARS



FORTY WEST



MALL of ARABIA



Heliopolis



Sahl Hashesh



Pyramids Hotel



SAVOY
SHARM EL SHEIKH



Heliopolis Towers



Taba



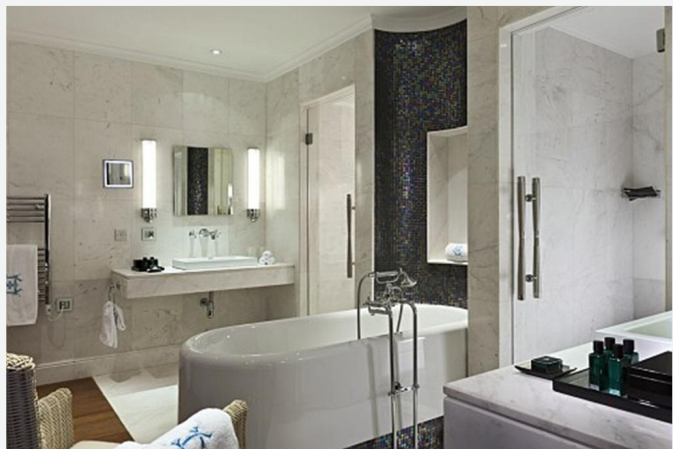
Grand Hyatt
Cairo



Ocean Blue
Ain El-Sokhna



HEART OF CAIRO



Furnished 300 Rooms

Sanitary Ware from Villeroy & Boch

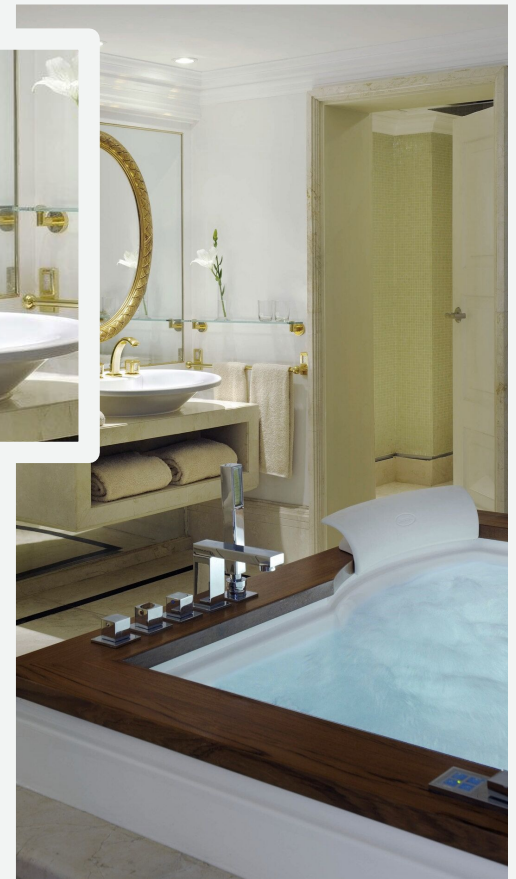
Sanitary Ware from Alape

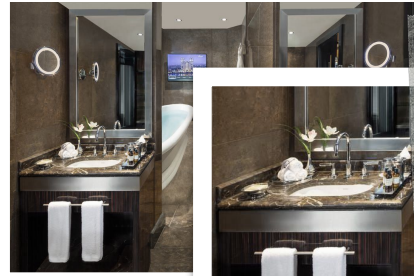
Mixers & Accessories from Dornbracht



Cairo

Furnished 1200
Bathroom
Sanitary Ware from
Villeroy & Boch





Heliopolis Towers

Furnished 440 Bathroom
Sanitary Ware from Villeroy & Boch
Mixers & Accessories from Pegler
Bathtub from Kaldewei

Fairmont

HOTELS & RESORTS

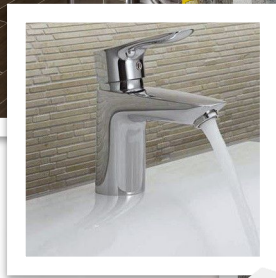
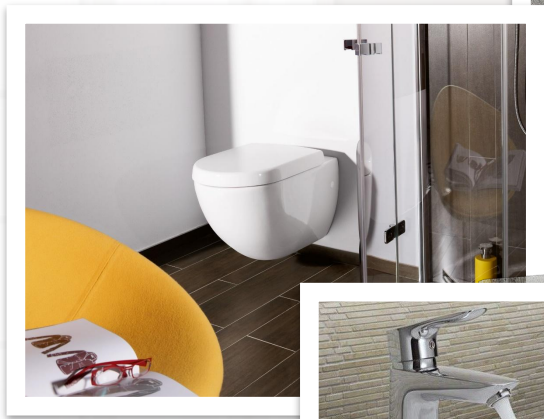
Nile City

Furnished 552 Bathroom
Sanitary Ware from Villeroy & Boch
Mixers & Accessories from Dornbracht
Bathtub from Kaldewei

Heliopolis

Furnished 593 Bathroom
Sanitary Ware from Villeroy & Boch
Mixers & Accessories from Kludi
Accessories from Roman Dietsche

Fouka bay



Subway 2.0 washbasin 7113-6G-01



Aveo new generation Hand washbasin
4131-50-R1



Subway 2.0 washbasin
7315-5G-01



Subway wall mounted WC
6600-10-01

OUR CAPABILITIES

15+

BRANDS

200+

COLLECTIONS

INFINITE DESIGN POSSIBILITIES

OUR BRANDS



GEDY



PESTAN





Villeroy & Boch

1748

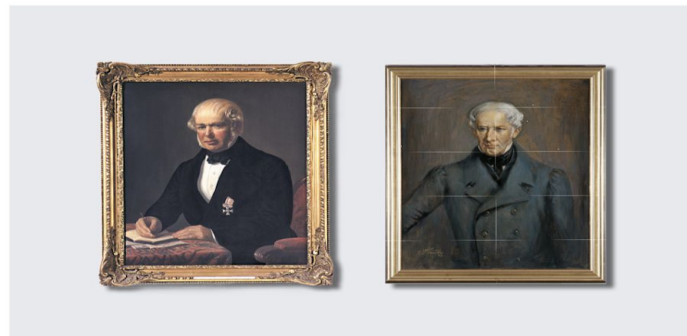


INSPIRING AND INVIGORATING

Villeroy & Boch stands for good cooperation

We have known the importance of good cooperation since 1836. In that year the former rivals Villeroy and Boch united to form the successful Villeroy & Boch company. Since our establishment in 1748, when Balthasar Neumann, the greatest European Baroque architect, was at his peak, renowned architects and designers have worked with us again and again, endowing our products with their distinctive styles and leaving their mark. Thus our famous Mettlach tiles still adorn Cologne Cathedral to this very day.

A further impressive example is the Schinkel Fountain in front of our headquarters in Mettlach – a gift from the Prussian Crown Prince Friedrich Wilhelm to Jean-François Boch. Henry van den Velde, Josef Maria Olbrich and Peter Berens have all contributed to our products and project business. In 1985 we launched the most spectacular advertising campaign of the 1980s with star photographer Helmut Newton. We have consistently drawn inspiration for our work from these relationships and hope in return to inspire those who work with us.



Jean-Francois Boch and Nicolas Villeroy



Mettlach tiles in Cologne cathedral

DEVOTED TO INNOVATION

Our innovations consistently set new standards

Villeroy & Boch has always endeavoured to stay one step ahead of the market. In our research and development department at our headquarters in Mettlach, many employees are strongly committed to ensure that we keep continuing in this direction for the future. Villeroy & Boch cooperates with renowned institutes and universities to obtain high-level research input. In this way we develop innovative, pioneering yet attractive product solutions.

1899 HYGIENE FOR ALL

With newly developed materials and manufacturing processes Villeroy & Boch starts making large-format sanitary ceramics.

1996 2-VOLUME FLUSH

In cooperation with Geberit, Villeroy & Boch is the first European supplier of the two-volume flush. With the Duo-saving button a flushing volume of 3 or 6 liters can be selected. With that, Villeroy & Boch set a clear sign with regards to a responsible use of natural resources.

2000 BDI ENVIRONMENTAL PRIZE FOR 4.5-LITER WC

For the ecologically and economically convincing innovation of the 4.5-liter toilet, Villeroy & Boch was awarded the environmental prize of the Federation of German Industries (BDI).

1748 THE BEGINNINGS

François Boch has a revolutionary idea: ceramic articles for everyday use. He founds a small pottery in Audun-le-Tiche.

1975 DESIGN ENTERS THE MIX

The complete bathroom furnishing concept by Luigi Colani is an inspiration for the entire sector.

1998 DESIGN ENTERS THE MIX CERAMICPLUS

With CeramicPlus, Villeroy & Boch offers a completely new type of surface finish that has already proven its worth a million times over to this day. Surfaces are much easier to clean and the reduction in the amount of water and cleaning agent required makes an important contribution to individual environmental protection.

AQUAREDUCT 4,5-LITER WC

With AquaReduct, Villeroy & Boch is one of the first suppliers to offer a 4.5-litre WC in its collection: An innovation that saves water and money – with unimpeded high rinsing performance. Today, Villeroy & Boch offers a comprehensive AquaReduct portfolio.

2003 SOFTCLOSING

Thanks to special dampers integrated into the hinges, WC seats with SoftClosing technology close gently and silently. This enhances comfort and prevents any noise caused by the cover slamming shut.

QUICKRELEASE

Villeroy & Boch WC seats with QuickRelease can be removed and replaced at any time for thorough and hygienic cleaning of the WC.

CONCEALED FASTENING

Thanks to an intelligent assembly technology, the fastenings for wall-mounted WCs and bidets are concealed within the ceramic. The result can be seen: seamless ceramic surfaces, which are easy to clean.

2007 SMARTFIX

Based on the principle of cable ties combined with a special guidance system, SmartFix enables secure fixing of the trap cover. It enables markedly quicker and more flexible installation of our trap covers, without tools and drilling. The system is visually perfect without visible attachment.

2009 3,5-LITER OMNIA ARCHITECTURA GREENGAIN

Again, it is possible to reduce water consumption in WCs. The GreenGain models from the Omnia range consume only 3.5 liters per rinse and set a further standard for environmentally-conscious living. With the Omnia Architectura GreenGain WC, a 4 person household can save up to 182 liters of water per week

SUPRAFIX

Thanks to the new attachment system SupraFix, wall-hung WCs from the collections La Belle, Memento and Subway 2.0 can now be installed in a few simple steps by just one person. Clear advantages for the WC design are also the elimination of fixing holes and their plastic covers on the side of the toilet.

2008 0,8-LITER CONCEALED WASTE UNIT

Villeroy & Boch has redesigned the concealed waste unit for urinals, setting new standards in water-saving; with only 0.8 liters of water per rinse, the new urinals are significantly more economical and therefore more environmentally friendly than conventional suction devices with a rinse quantity of 2 to 3 Liters.

2013 VICHANGE

Ideal for public buildings: easy to install and service. The ViChange siphon cartridge can be replaced in just 30 seconds.

2015 ANTIBAC

The new glaze contains silver ions that have been proven to reduce the growth of bacteria on ceramic surfaces and WC seats by more than 99.9%! In combination with CeramicPlus and the rimless DirectFlush WCs, AntiBac ensures maximum cleanliness and hygiene – throughout the product lifetime!

TITANCERAM

TitanCeram is an innovative new ceramic material from Villeroy & Boch for impressively delicate shapes. TitanCeram makes it possible to produce precise bathroom ceramics with extremely thin walls and clearly defined edges, and is also very stable and robust. Making it ideal for premium bathroom designs.

2012 DIRECTFLUSH

The new rimless WC generation can be cleaned more quickly and easily. Our DIRECTFLUSH WCs provide an optimum flush with 3/4.5 litres, without splashing.

4,5-LITER SUBWAY 2.0

The new design permits wall-mounted Subway WCs with a full flush using just 4.5l of water with AquaReduct. This innovation makes the Villeroy & Boch 4.5l WC portfolio one of the largest on the market.

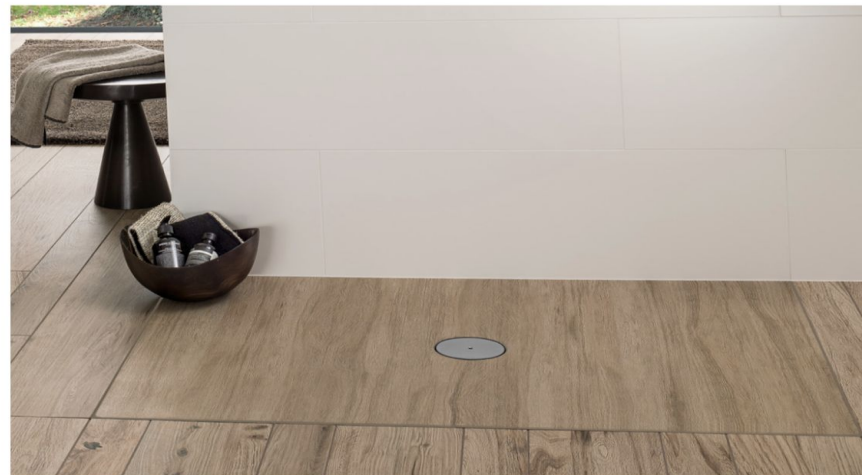
DECOR AND COLOR COMPETENCE

Modern colors and individual design in perfect quality.

Villeroy & Boch is characterized by the highest color competences: 18 of the 19 standardized and shared colors in the ceramics industry, were developed in the Villeroy & Boch laboratories. The consistently high quality of the colors is guaranteed by:

- Development of colors in own laboratories
- Preparation of the colored glazes for all international plants in one central location
- Continuous production monitoring to detect deviations early
- High-quality, extra thick glaze

For a selected range of colors and ceramics, Villeroy & Boch guarantees a 10-year repurchase guarantee. In addition, Villeroy & Boch offers the possibility to individualize ceramic products with decors, colors and logos according to your specifications.



Individual ViPrint designs


reddot design award
winner 2016

 DESIGN
AWARD
2016



Individual designs



Matt colours

INNOVATIONS

Ceramic Plus

Villeroy & Boch

Specially refined glaze based on innovative surface technology with hydrophobic (water-repellent) and oleophobic (oil and grease-repellent) properties (beading and non-stick effect).



AntiBac

Villeroy & Boch

Glaze with anti-bacterial effect that reduces the growth of bacteria by more than 99.9%. Especially suitable for healthcare facilities and busy commercial areas.



Direct Flush

Villeroy & Boch

The new generation of rimless WCs offers particularly quick and thorough cleaning. A precise, splash-free water flow ensures the entire interior of the bowl is rinsed thoroughly to ensure cleanliness.

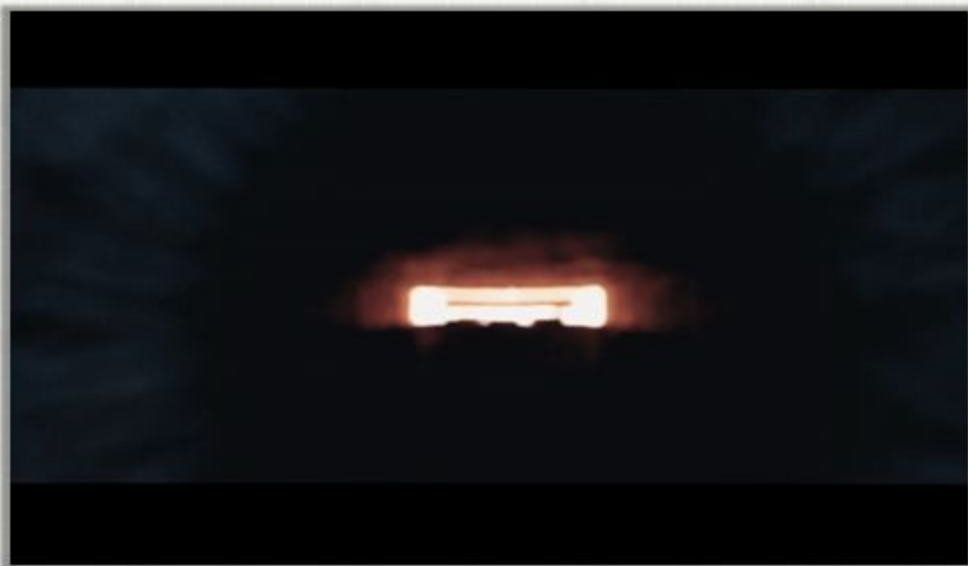


Titan Ceram

Villeroy & Boch

TitanCeram is an innovative new ceramic material from Villeroy & Boch for impressively delicate shapes. TitanCeram makes it possible to produce precise bathroom ceramics with extremely thin walls and clearly defined edges, and is also very stable and robust. Making it ideal for premium bathroom designs.


Villeroy & Boch
1748



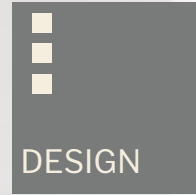
BATHROOM COLLECTIONS



O.Novo
O.Novo Vita



Architectura
Architectura Vita



Subway
Subway 2.0
Loop & Friends
Venticello
Collaro
Pura
Avento
Legato



Momento
Momento 2.0
Hommage
Finion
Aveo
Aveo New Generation
Metric Art
Antheus
My Nature
Artis
Octagon















Villeroy & Boch

1748

Architectura wall-mounted Washdown toilet

Architectura – The variety of clear design
The bathroom ceramics in the Architectura collection from Villeroy & Boch impress with timelessly beautiful, puristic design and high functionality. Most toilet models have a rimless DirectFlush design.

Oval or angular, all shapes for your individual bathroom design
Tailored solutions for bathrooms of all sizes - from a compact toilet to a comfortable extra large model
Clean design for your dream bathroom



Designed by renowned interior designer Steve Leung
Wall-mounted toilets for easy floor cleaning
Hygienic solution with minimal odour formation:
low-flush toilets
The rimless generation of toilets - top cleanliness and perfect design
CeramicPlus for quick and hygienic cleaning
AntiBac is proven to reduce growth of bacteria by 99.9%





Villeroy & Boch

1748

O.Novo WASHDOWN WC

O.novo - Surprising. Versatile. Inexpensive.

O.novo from Villeroy & Boch offers the full spectrum of modern bathroom design. The diverse range covers everything from wash basins through to shower trays and toilets. The various products can be mutually combined to perfectly match your style. The washbasins impress with their clean design and diverse installation options.



The O.novo toilets unite function and design
Wall-mounted toilets for easy floor cleaning
Hygienic solution with minimal odour formation: low-flush toilets
CeramicPlus for quick and hygienic cleaning
AntiBac is proven to reduce growth of bacteria by 99.9%
AquaReduct - 1.5-litre water saving with undiminished flush performance



VIRTUAL BATHROOM PLANNER

BATHROOM PLANNING

[Tips and tricks on using the planner](#)

PROFESSIONAL TEMPLATES

[Plans for a quick start](#)

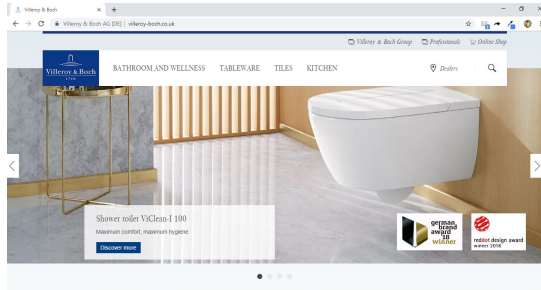
INSPIRATION

[New ideas and designs](#)

VIRTUAL BATHROOM PLANNER

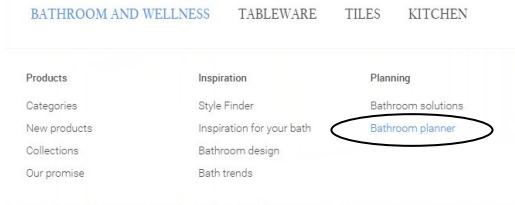
- STEP 1

Visit www.villeroy-boch.com



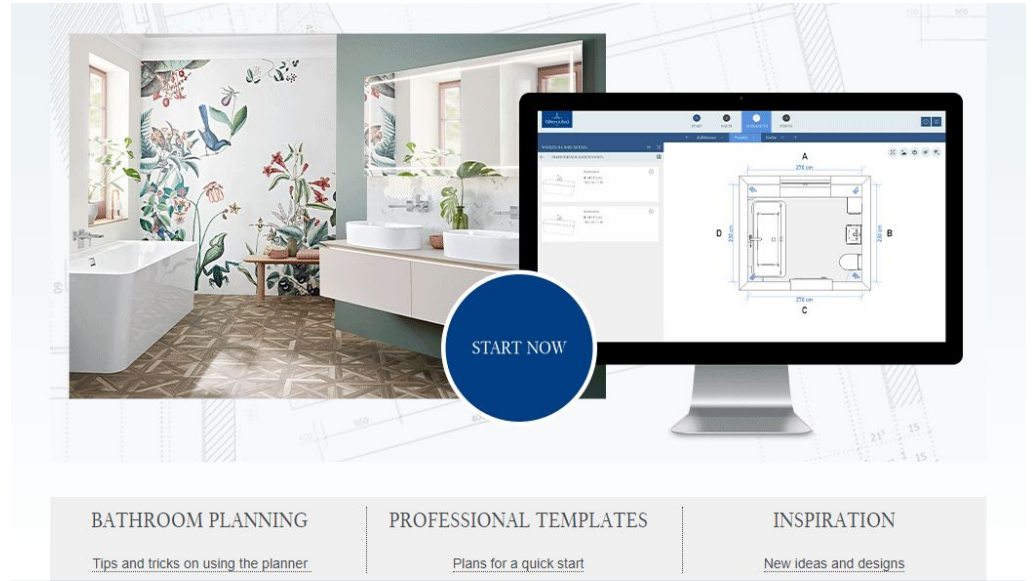
- STEP 2

Hover over Bathroom & Wellness in the navigation bar, then click on Bathroom Planner under Planning Category

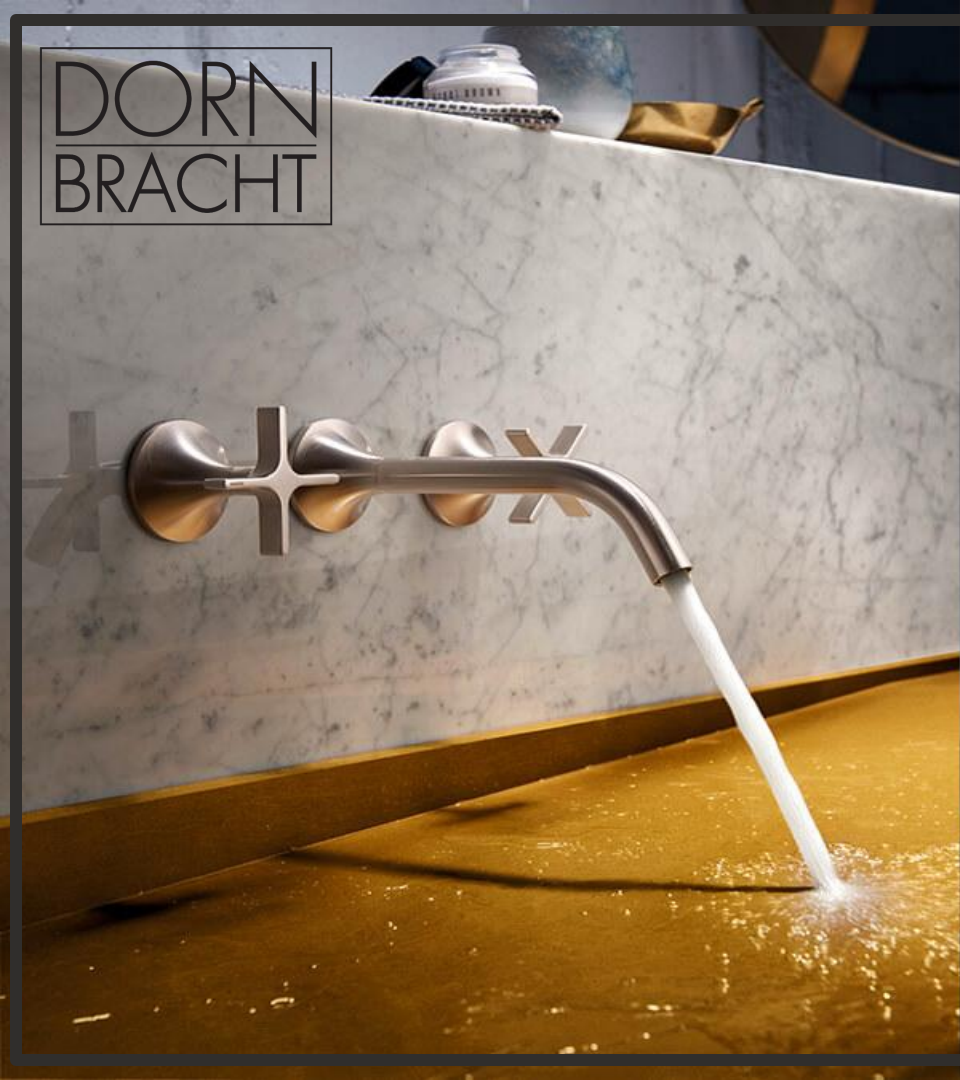


- STEP 3

Start Planning



DORN
BRACHT





DORN
BRACHT



DORN
BRACHT



DORN
BRACHT











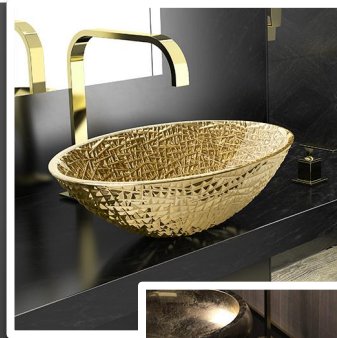








OUR CAPABILITIES



THG
PARIS



THG
PARIS



THG
PARIS

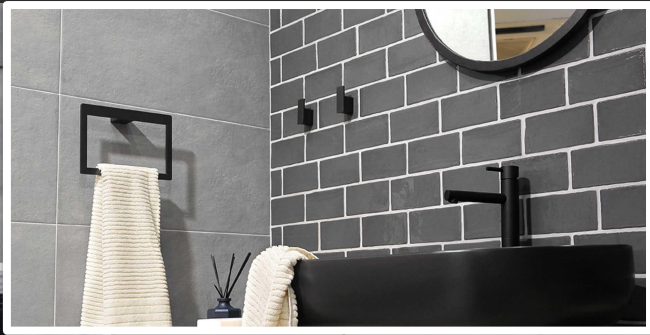


THG
PARIS

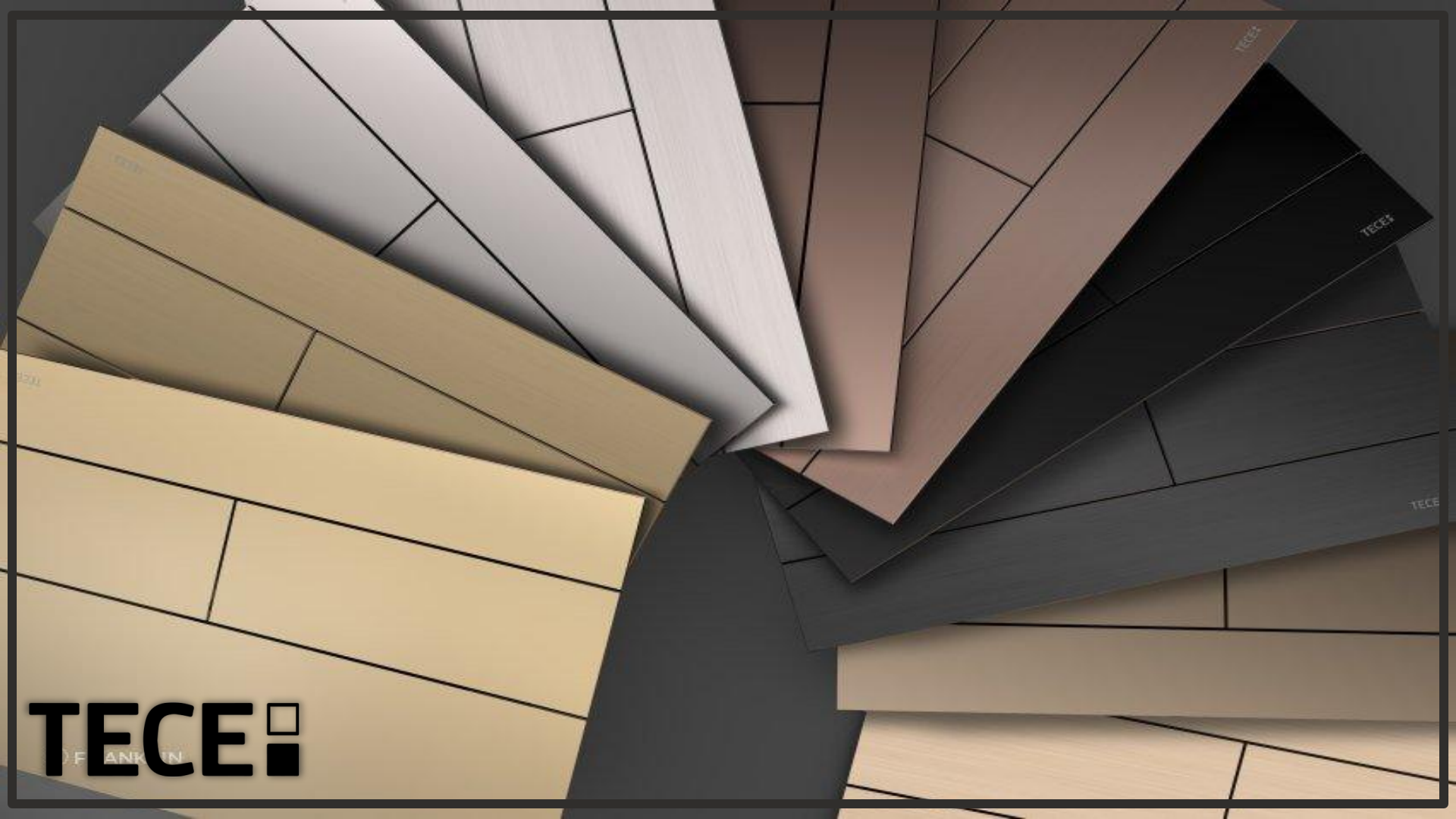


THG
PARIS





 **sanco**
bathroom theory



TECE 
OF FRANKFURT







Jacuzzi®









Jacuzzi





A modern bathroom with a white vanity, a bathtub, and a window with a view of a city. The vanity has a white rectangular sink and a dark countertop. A large round mirror is mounted on the wall above the vanity. To the right, there is a bathtub with a towel draped over the side. A window on the right wall provides a view of a city building. The text "THANK YOU" is overlaid in the center of the image.

THANK YOU