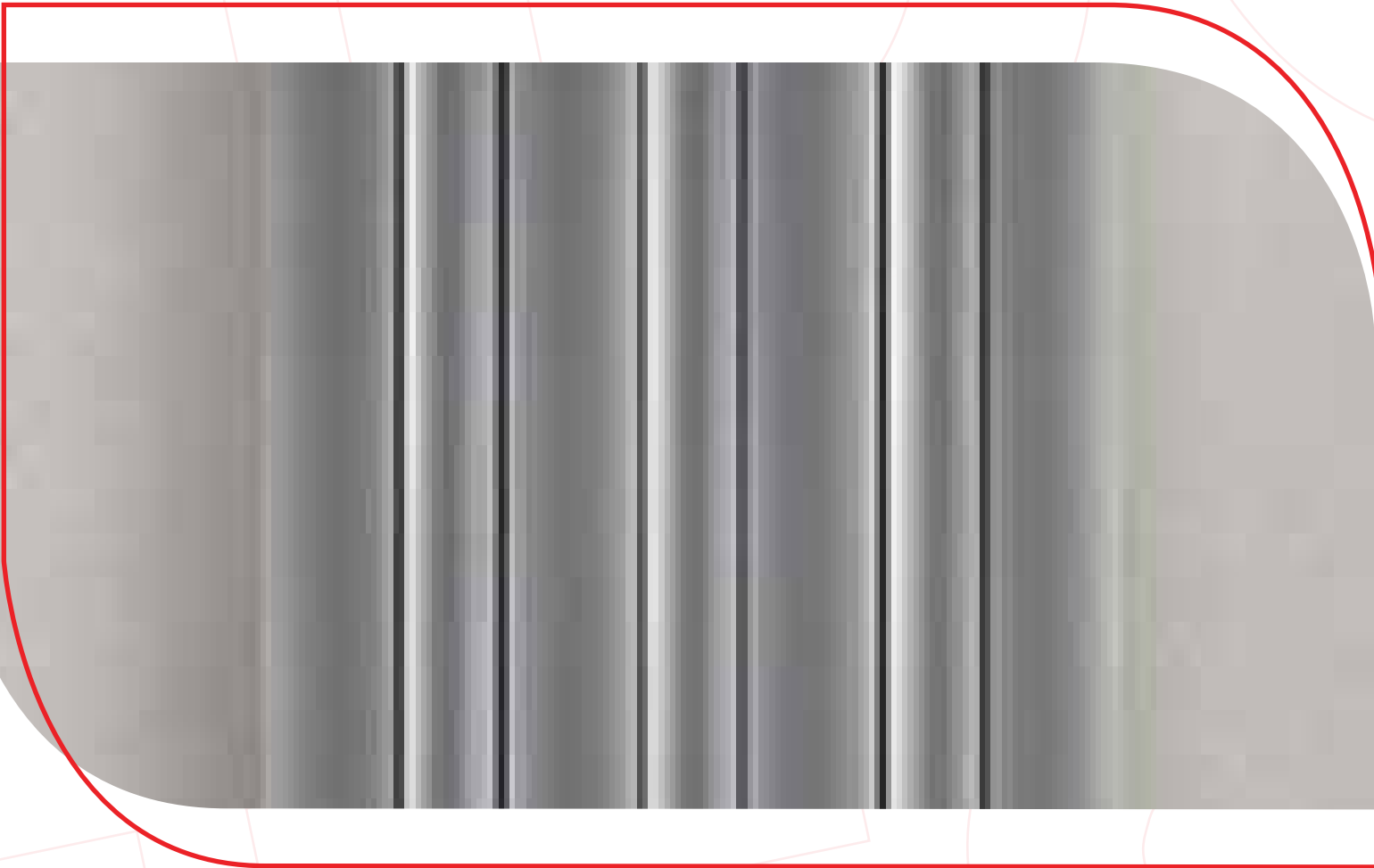


**EDGES**  
WARMING YOUR STYLISH LIVING

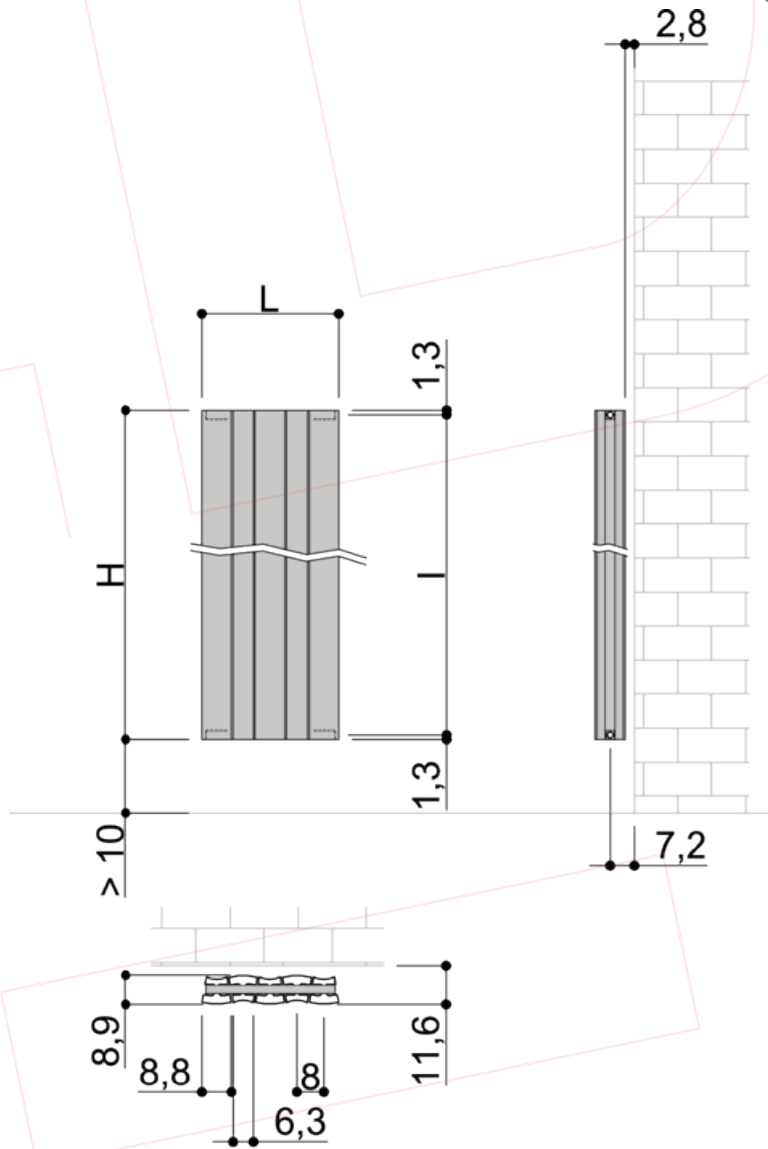
**ONDULATO**

# ONDULATO



Extruded radiator with sinuous lines that radiate along the whole height making it an object with a striking appearance. Adaptable to all domestic environments will make your internal decor more pleasant.

# ONDULATO





codice code	versione feeding	n numero elementi elements number	H altezza height	L larghezza width	i interasse center to center distance	Qs (W) resa termica thermal yield		peso a vuoto weight empty (kg)	contenuto d'acqua water content (lt)
			(mm)	(mm)		Dt 30°C	Dt 50°C		
600.1.180005.22		5	1826	408	1800	512,2	1087,8	16,4	1,8
600.1.180007.22		7		568		717,1	1522,9	22,9	2,6
600.1.180009.22		9		728		922,0	1958,0	29,5	3,3

\* Collector width for defining the interaxis in the case of 8/9/E/F connections: -22 mm compared to the width (L)



# ACCESSORIES

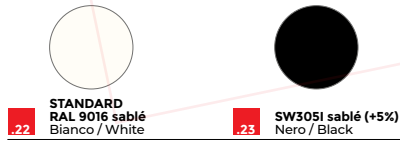
## VALVES, LOCKSHIELDS AND VALVE/LOCKSHIELD ASSEMBLIES

Codice .	Descrizione .
	<b>Detentore dritto, cromato, per impianti bitubo</b> Straight lockshield suitable for thermostat control, chromed, for double pipe plants
<b>108.103</b>	<b>Detentore per tubi rame, multistrato o ferro / Lockshield for copper, multilayer or iron pipes connection</b>
	<b>Valvola a squadra termostattabile, cromata, per impianti bitubo</b> Angle valve suitable for thermostat control, chromed, for double pipe plants
<b>106.103</b>	<b>Valvola per tubi rame, multi strato o ferro / Valve for copper, multilayer or iron pipes connection</b>
	<b>Detentore a squadra cromato per impianti bitubo</b> Angle lockshield suitable for thermostat control, chromed, for double pipe plants
<b>102.103</b>	<b>Detentore per tubi rame, multistrato e ferro / Lockshield for copper, multilayer or iron pipes connection</b>
	<b>Gruppo valvola remoto termostattabile con attacchi 1/2" F, per impianti bitubo/monotubo, finitura cromo</b> Remote manual valve/lockshield assembly suitable for thermostat control with connections 1/2" F, for double/single pipes plant, chrome finish
<b>205.21</b>	<b>Gruppo manuale / Remote manual</b>
	<b>Kit valvola combinata per scaldasalviette ov- al bath / cu-al bath - round al bath per installazione resistenza assiale (versione mista)</b> Valve kit combined for towel warmers ov- al bath / cu-al bath - round al bath for axial resistance installation (hybrid version)
<b>205.51</b>	<b>Gruppo con ingresso SX / Assembly with left-side inlet</b>
<b>205.52</b>	<b>Gruppo con ingresso DX / Assembly with right-side inlet</b>
	<b>Valvola manuale e detentore ad angolo, cromata, per impianti bitubo</b> Angle manual valve and lockshield, chromed, for double pipe plants
<b>151.101</b>	<b>Consigliata per Cubal Bath, Fino e Collezione Piano / Suggested for Cubal Bath, Fino and Piano Collection</b>
	<b>Valvola manuale dritta e detentore, cromata, per impianto bitubo</b> Straight manual valve or lockshield, chromed for double pipe plants Suggested for Cubal Bath, Fino and Piano Collection
<b>152.101</b>	<b>Consigliata per Cubal Bath, Fino e Collezione Piano /</b>

# FINISHES

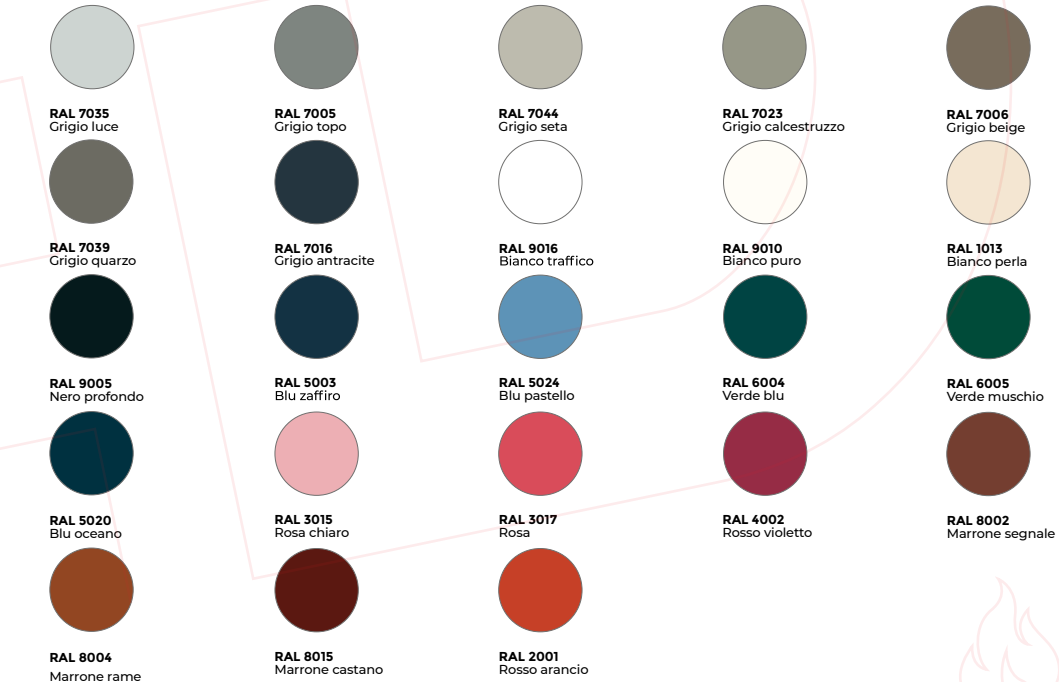
## COLORS AVAILABLE

### FINITURE BASE . BASIC FINISHES

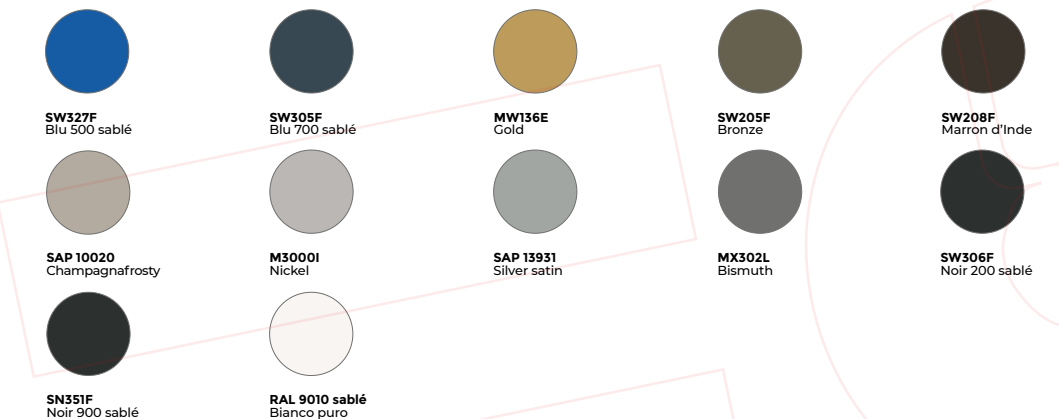


### FINITURE DISPONIBILI A RICHIESTA . FINISHES AVAILABLE ON REQUEST

#### VERNICIATURE RAL . RAL PAINTS



### FINITURE E VERNICIATURE SPECIALI . FINISHES AND SPECIAL PAINTS



+20% sul prezzo standard / +20% on standard price

### FINITURE SPECIALI . SPECIAL FINISHES



Vedere sovrapprezzo nelle schede tecniche / See price on the technical sheets

### FINITURE ANODIZZATE METALLIZZATE A CATALOGO . METALLIC ANODIZED FINISHES ON CATALOGUE

Solo per modelli ROUND-AL BATH, CUBE-AL BATH, OV-AL BATH, TOWEL BAR, OV-AL SLIM, OV-AL HORIZONTAL  
Only for models ROUND-AL BATH, CUBE-AL BATH, OV-AL BATH, TOWEL BAR, OV-AL SLIM, OV-AL HORIZONTAL



+40% sul prezzo standard



+2 0110 177 7751

[www.EdgesHeating.com](http://www.EdgesHeating.com)

[Infor@solaredges.com](mailto:Infor@solaredges.com)

2 Ext 26 July St . Lebnan Sq .

El Hawary Tower , Mohandessin

Giza 12654 - Egypt



@EdgesSolar



@Edges Heating Systems & Solar Energy



[www.EdgesHeating.com](http://www.EdgesHeating.com)