

Home Automation Proposal

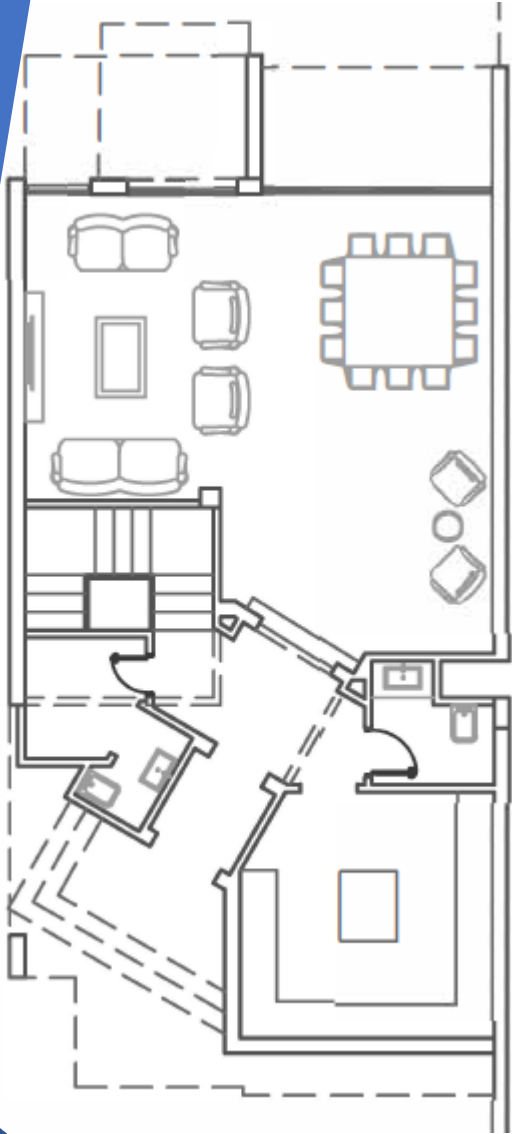


S-CUBE
SUSTAINABLE SMART
SOLUTIONS

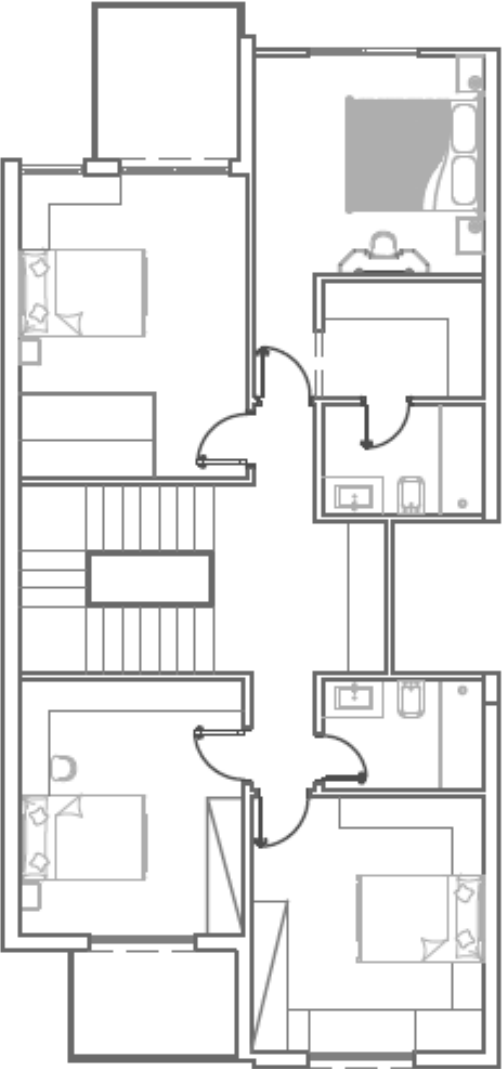
Scope of Work:

Lighting Control	✓
Shutter Control	✓
Curtain Control	✓
AC / TV Control	✓
Touchpad Screen	✓
Mobile App	✓
Security System	
Safety System	
Surveillance System	
Sound System	✓

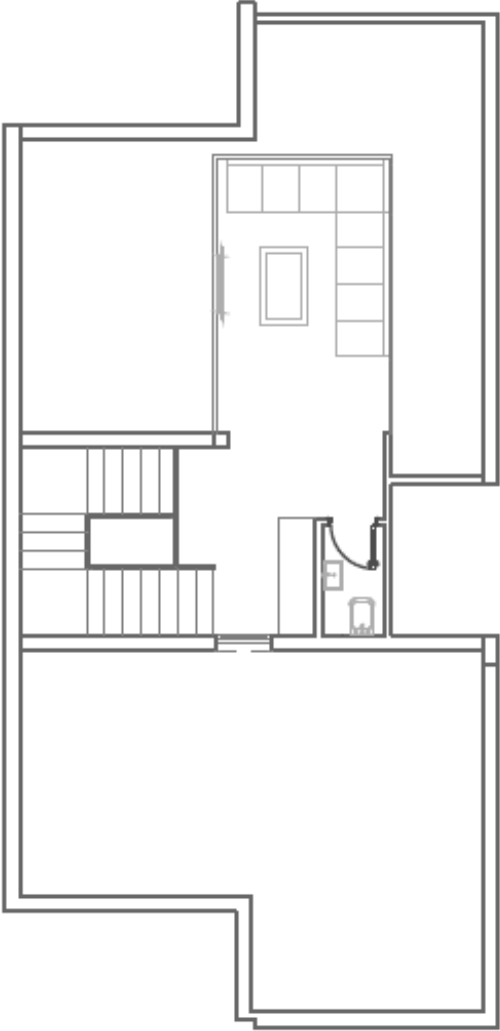
Ground Floor



First Floor



Roof Floor



S-CUBE
SUSTAINABLE SMART
SOLUTIONS

System Components



Ground Floor			
Lighting Control Items			
Item	Quantity	Function	Area
Mserv 3s Module	1	System Main Component + Control 8 lighting points	Reception
M LED 1s	2	Control up to 32 lighting points	Stairs
Wall Motion Sensor	3	Lighting control based on movement	Stairs
Ceiling Motion Sensor	1	Lighting control based on movement	Entrance

First Floor			
Lighting Control Items			
Item	Quantity	Function	Area
Mrel 8s Module	1	Control 8 lighting points	Master Bedroom + Corridor
Ceiling Motion Sensor	1	Lighting control based on movement	Master Bedroom
Mrel 8s Module	1	Control 8 lighting points	Bedrooms

System Components



Ground Floor			
Item	Quantity	Function	Area
Mrel 8s Module	1	Shutters control for 4 windows	Reception
Touchpad Screen	1	Smart screen to control 4 points	Reception
Infrared Transmitter	2	controls TV and 2 AC devices from mobile app	Reception

First Floor			
Item	Quantity	Function	Area
Mrel 2s Module	1	Shutter control for 1 window	Master Bedroom
Touchpad Screen	1	Smart screen to control 2 points with scenarios	Master Bedroom



System Components



Ground Floor			
Sound System Items			
Item	Quantity	Function	Area
Home Theater	1	Audio-video system to provide cinema-like experience	Living Room
Invisible Ceiling Loud Speakers	4	Hidden sound speaker	Reception



S-CUBE

SUSTAINABLE SMART
SOLUTIONS



+20 223 446740 - 0111 8 333 632



www.scube-solutions.com



Mirage Mall, 3rd floor - Suez Road - New Cairo