

# daylight2

Specifiers Manual





## **CONTACT INFORMATION**

### **CONTACT INTERIORS HEAD OFFICE**

134 El Nile Street, Agouza

12411, Giza, Egypt

Telephone: +2 023335 1675

Email: [info@contact-interiors.com](mailto:info@contact-interiors.com)

[www.contact-interiors.com](http://www.contact-interiors.com)

**Contact Interiors**  
**Intelligent Design**

**Est. 1979**

Demountable Partitions



Wall Claddings



Millwork



Acoustic Ceilings

## WELCOME

---

This manual has been prepared by Contact Interiors to assist the architect and builder to specify Daylight2 glazed partitioning systems.

It has been written as a working guide for the industry, however it is not intended to replace good trade practice and experience is essential to obtaining a quality installation. Nor does this manual override specific advice received from Contact Interiors' technical services.

While it is not possible to detail every condition that may be encountered, Contact Interiors will advise on any special situations that may occur. Our technical team is available to assist with design for project specific extrusions to compliment the Daylight2 system, to allow designers and specifiers to introduce a specific look to larger projects.

Architects and specifiers should ensure that the details provided in this manual are followed, and determine to their own satisfaction that the job is complete to an acceptable standard of trade practice

### **CONTACT INFORMATION**

#### **CONTACT INTERIORS HEAD OFFICE**

134 El Nile Street, Agouza

12411, Giza, Egypt

Telephone: +2 023335 1675

Email: [info@contact-interiors.com](mailto:info@contact-interiors.com)

**[www.contact-interiors.com](http://www.contact-interiors.com)**

# CONTENTS

---

	<b>General Information</b>	<b>6</b>
A	<a href="#">Company Overview</a>	
B	<a href="#">Product Overview</a>	
C	<a href="#">Aluminium</a>	
D	<a href="#">Glass</a>	
E	<a href="#">Wood</a>	
F	<a href="#">Ceiling Support / Bracing</a>	
<b>1</b>	<b>Daylight2 Double Glazing</b>	<b>12</b>
1.0	<a href="#">System Overview, Sample Specifications, System Photographs</a>	
1.1	<a href="#">System Datasheet</a>	
1.2	<a href="#">Detail References</a>	
1.3	<a href="#">Standard System Profiles and Accessories</a>	
1.4	<a href="#">Detail Drawings</a>	
<b>2</b>	<b>Daylight2 Single Glazing</b>	<b>24</b>
2.0	<a href="#">System Overview, Sample Specifications, System Photographs</a>	
2.1	<a href="#">System Datasheet</a>	
2.2	<a href="#">Detail References</a>	
2.3	<a href="#">Standard System Profiles and Accessories</a>	
2.4	<a href="#">Detail Drawings</a>	
<b>3</b>	<b>Daylight2 Classic Double Glazing</b>	<b>36</b>
3.0	<a href="#">System Overview, Sample Specifications, System Photographs</a>	
3.1	<a href="#">System Datasheet</a>	
3.2	<a href="#">Detail References</a>	
3.3	<a href="#">Standard System Profiles and Accessories</a>	
3.4	<a href="#">Detail Drawings</a>	
<b>4</b>	<b>Daylight2 Classic Double Glazing</b>	<b>48</b>
4.0	<a href="#">System Overview, Sample Specifications, System Photographs</a>	
4.1	<a href="#">System Datasheet</a>	
4.2	<a href="#">Detail References</a>	
4.3	<a href="#">Standard System Profiles and Accessories</a>	
4.4	<a href="#">Detail Drawings</a>	

## GENERAL INFORMATION

---

### COMPANY OVERVIEW

#### WHAT WE DO

Contact Interiors are experts in the design, production, and installation of quality products and proven solutions to the commercial construction market throughout Egypt. Our services include demountable partitions, wall claddings, suspended ceilings in gypsum and wood, and carpentry works.

#### OUR MISSION

We aim to lead the market in innovation, delivery and service by exceeding customer expectations and build lasting mutually profitable customer relationships. Our production and management procedures ensure our products are manufactured from quality materials and to the highest of standards.

#### OUR HISTORY

Established in 1978, Contact Interiors has grown with Egypt's commercial building industry and has built valuable relationships with key suppliers and clients alike. Our products are installed in every sector of commercial or administrative construction, from government to healthcare to real estate.

## PRODUCT OVERVIEW

---

Contact Interiors' Daylight2 series of Aluminium partitioning systems incorporate a number of design elements that are interchangeable, allowing for a highly configurable system that can fit most design and budget requirements.

### **DAYLIGHT2 DOUBLE GLAZING**

Daylight2 provides frameless double glazing with numerous configurations and design options, offering a complete partition system for glazed and solid paneling.

Daylight2 has the following features:

- Standard profile size of 50 x 28 mm at base and 50 x 50 mm at ceiling.
- Can accommodate glass thicknesses between 10 mm - 13.52 mm.
- Doors can be double glazed or solid, 54 mm thickness.
- Can accommodate solid panels in 17 mm thick MDF, laminated in Veneer, HPL, or Melamine.
- Acoustic insulation from 40 to 45 dB.

### **DAYLIGHT2 SINGLE GLAZING**

Daylight2 provides frameless single glazing with numerous configurations and design options, offering a complete partition system for glazed and solid paneling.

Daylight2 has the following features:

- Standard profile size of 50 x 28 mm at base and 50 x 50 mm at ceiling.
- Can accommodate glass thicknesses between 10 mm - 13.52 mm.
- Doors can be double glazed or solid, 54 mm thickness.
- Can accommodate solid panels in 17 mm thick MDF, laminated in Veneer, HPL, or Melamine.
- Acoustic insulation from 31 to 38 dB.

### **DAYLIGHT2 CLASSIC DOUBLE GLAZING**

Daylight2 provides framed double glazing with numerous configurations and design options, offering a complete partition system for glazed and solid paneling.

Daylight2 has the following features:

- Standard profile size of 50 x 28 mm at base and 50 x 50 mm at ceiling.
- Post/Transom profile size 37 x 50 mm can be used vertically or horizontally.
- Can accommodate glass thicknesses between 10 mm - 13.52 mm.
- Doors can be double glazed or solid, 54 mm thickness.
- Can accommodate solid panels in 17 mm thick MDF, laminated in Veneer, HPL, or Melamine.
- Acoustic insulation from 40 to 45 dB.

### **DAYLIGHT2 CLASSIC SINGLE GLAZING**

Daylight2 provides framed single glazing with numerous configurations and design options, offering a complete partition system for glazed and solid paneling.

Daylight2 has the following features:

- Standard profile size of 50 x 28 mm at base and 50 x 50 mm at ceiling.
- Post/Transom profile size 37 x 50 mm can be used vertically or horizontally.
- Can accommodate glass thicknesses between 10 mm - 13.52 mm.
- Doors can be double glazed or solid, 54 mm thickness.
- Can accommodate solid panels in 17 mm thick MDF, laminated in Veneer, HPL, or Melamine.

# ALUMINIUM

---

## TECHNICAL INFORMATION

A unique combination of properties puts Aluminium and its alloys among our most versatile engineering and construction materials. All alloys are light in weight, yet some have strengths greater than that of structural steel. The majority of alloys are highly durable under most service conditions. No colored salts are formed to stain adjacent surfaces or discolor products with which they come in contact, such as fabrics in the textile industry and solutions in chemical equipment. They have no toxic reaction. Aluminium and most of its alloys have good electrical and thermal conductivities and high reflectivity to both heat and light.

Aluminium and most of its alloys can easily be worked into any form and readily accept a wide variety of surface finishes.

Aluminium's best known characteristic is perhaps its light weight, having a density of approximately  $2.7 \times 10^3$  kilograms per cubic meter at  $20^\circ\text{C}$  as compared with  $7.9 \times 10^3$  for iron and  $8.9 \times 10^3$  for copper.

## HARDNESS

Our products use the common Aluminium alloy 6063, which is composed of 97.5% Aluminium and a mixture of Magnesium, Silicon, Iron, Chromium, Copper, Manganese, Titanium, and Zinc. Alloy 6063 is tempered to a hardness rating when extruded, according to the requirements of the assembly.

For assemblies where curving of the profile is required a hardness of T4 is used (6063-T4).

For regular assemblies, a hardness of T5 is used (6063-T5).

For assemblies with extreme heights and high load bearing requirements, a hardness of T6 is used (6063-T6),

## FINISHING WITH POWDER COATING

Aluminium profiles must be powder coated to protect them from abrasion and natural weathering through oxidation. The following explains the powder coating process.

### Pre-treatment

In order to obtain good paint adhesion, the Aluminium extrusions must first be pretreated. The eight stages are firstly, a detergent cleaner to remove oil and smut. This is followed by a rinse then an acid etch. After the etch, the Aluminium is dipped into two consecutive rinse tanks to flush impurities from the Aluminium substrate then immersed in a chromate conversion tank prior to a final rinse. The extrusions are then placed into a drying oven.

The chromate conversion layer applied to the substrate becomes an integral part of the Aluminium and forms a corrosion resistant layer for the powder to adhere to.

### Spraying methods

The main principle of painting is the charging of powder particles.

The powder particles are charged when forced down a Teflon tube which is wrapped around the barrel of the spray gun. By rubbing against this tube the particles of powder gain a positive charge. Once the charged particles exit the spray gun, they are attracted to the earthed Aluminium extrusions and the powder wraps around the extrusion to give an even, uniform finish. After spraying, the extrusions are cured at specified temperatures and times in order for the coating to flow out and cure.



# GLASS

---

## TECHNICAL INFORMATION

Contact Interiors exclusively uses float glass for all our products.

Float glass is a sheet of glass made by floating molten glass on a bed of molten metal, typically tin. This method gives the sheet uniform thickness and very flat surfaces. Glass may be provided tempered (un-treated), tempered, or laminated.

Tempered glass is ordinary float glass, that has not been heat-strengthened or tempered. Annealing float glass is the process of controlled cooling to prevent residual stress in the glass and is an inherent operation of the float glass manufacturing process.

Tempered or toughened glass is a type of safety glass processed by controlled thermal or chemical treatments to increase its strength compared with normal glass. Tempering puts the outer surfaces into compression and the interior into tension. Such stresses cause the glass, when broken, to shatter into small granular chunks instead of splintering into jagged shards as ordinary tempered glass does. The granular chunks are less likely to cause injury.

Laminated glass is a type of safety glass that holds together when shattered. In the event of breaking, it is held in place by a thin polymer interlayer, typically of polyvinyl butyral (PVB), between its two or more layers of glass. The interlayer, made through heat and pressure, keeps the layers of glass bonded even when broken, and its high strength prevents the glass from breaking up into large sharp pieces.

Individual lites of glass in laminated compositions are tempered prior to lamination.

## GLASS WEIGHT

Generally 2mm Glass thickness per m<sup>2</sup> = 5kg, i.e. 6mm glass = 15kg/m<sup>2</sup>

## GLASS OPTIONS

Glass Thickness (mm)	Type of Glass	Composition	Maximum Height (mm)
10	Tempered	10 mm fully tempered	2700
10.76	Laminated	5 mm tempered + 0.76 mm PVB + 5 mm tempered	2700
11.52	Laminated	5 mm tempered + 1.52 mm PVB + 5 mm tempered	2700
11.76	Laminated	5 mm tempered + 0.76 mm PVB + 6 mm tempered	2700
12	Tempered	12 mm fully tempered	3000
12.76	Laminated	6 mm tempered + 0.76 mm PVB + 6 mm tempered	3000
13.52	Laminated	6 mm tempered + 1.52 mm PVB + 6 mm tempered	3000

Notes:

- Heights above recommended value require specific design.
- Laminated glass lites may be tempered at extra cost due to extra risk of spontaneous shattering.

## WOOD

---

### TECHNICAL INFORMATION

The solid panels and flush doors in Contact Interiors' partitions are composed mainly of MDF.

Medium Density Fiberboard (MDF) panels are manufactured with a variety of physical properties and dimensions, providing the opportunity to design the end product with the specific MDF needed. MDF is a composite panel product typically consisting of cellulosic fibers combined with a synthetic resin or other suitable bonding system and joined together under heat and pressure. Additives may be introduced during manufacturing to impart additional characteristics. The surface is flat, smooth, uniform, dense and free of knots and grain patterns. The homogeneous density profile of these panels allows intricate and precise machining and finishing techniques for superior finished MDF products.

### FINISHING

#### **Natural Veneer**

Natural veneer refers to thin slices of wood, usually thinner than 3 mm that typically are glued onto core panels (typically, wood, particle board or medium-density fiberboard) to produce flat panels such as doors, tops and panels for cabinets, parquet floors and parts of furniture. Veneer is obtained either by "peeling" the trunk of a tree or by slicing large rectangular blocks of wood known as flitches. The appearance of the grain and figure in wood comes from slicing through the growth rings of a tree and depends upon the angle at which the wood is sliced.

Natural veneer faced doors and panels are left with their natural color or colored with a transparent wood stain (oil or water based). Individual sheets of veneer on the same core panel may be lighter or darker in shade. This is due to the natural growth of the material and will show in the final finish. Veneer is finished in nitro cellulose sealer and polyurethane varnish.

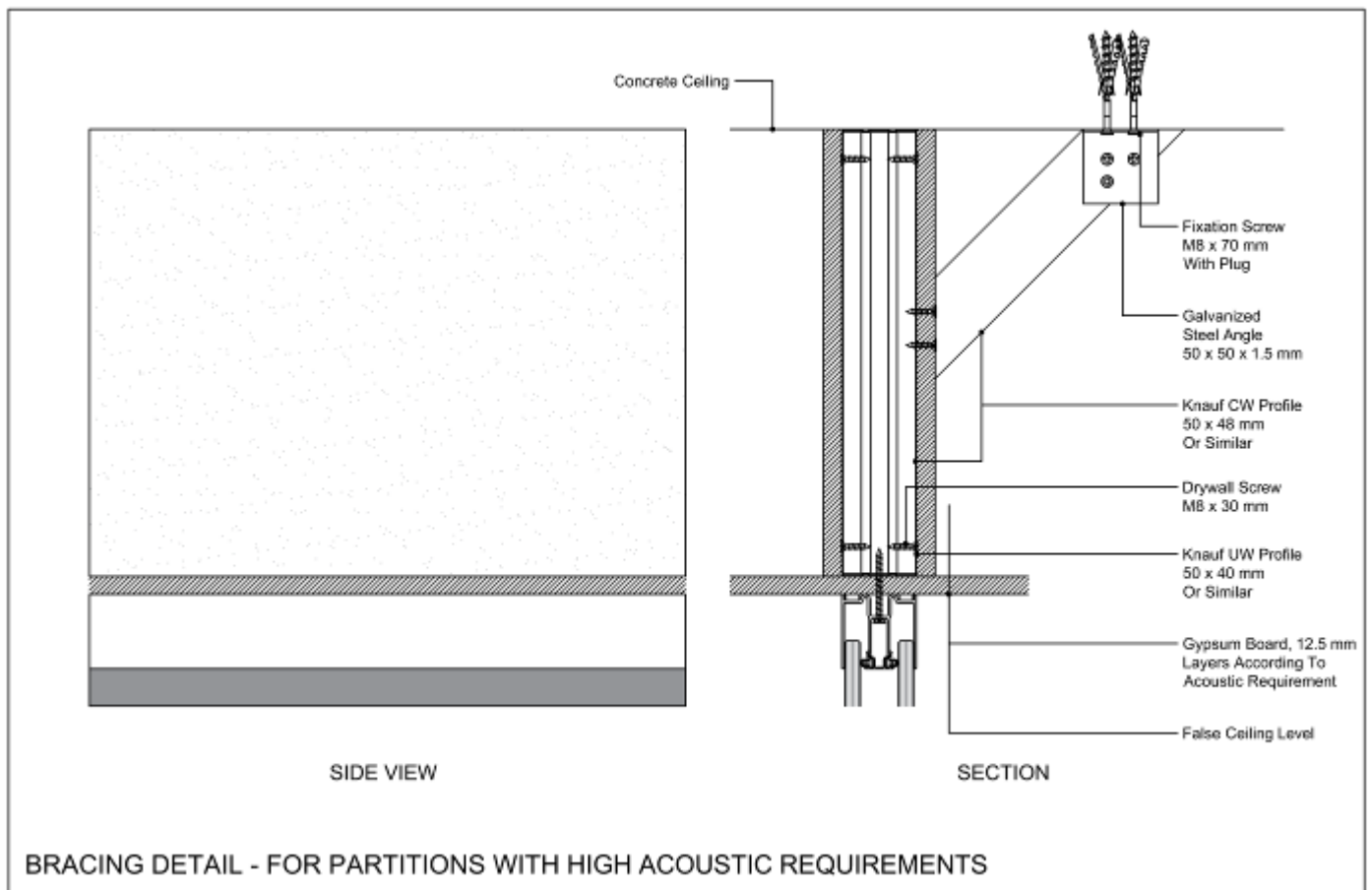
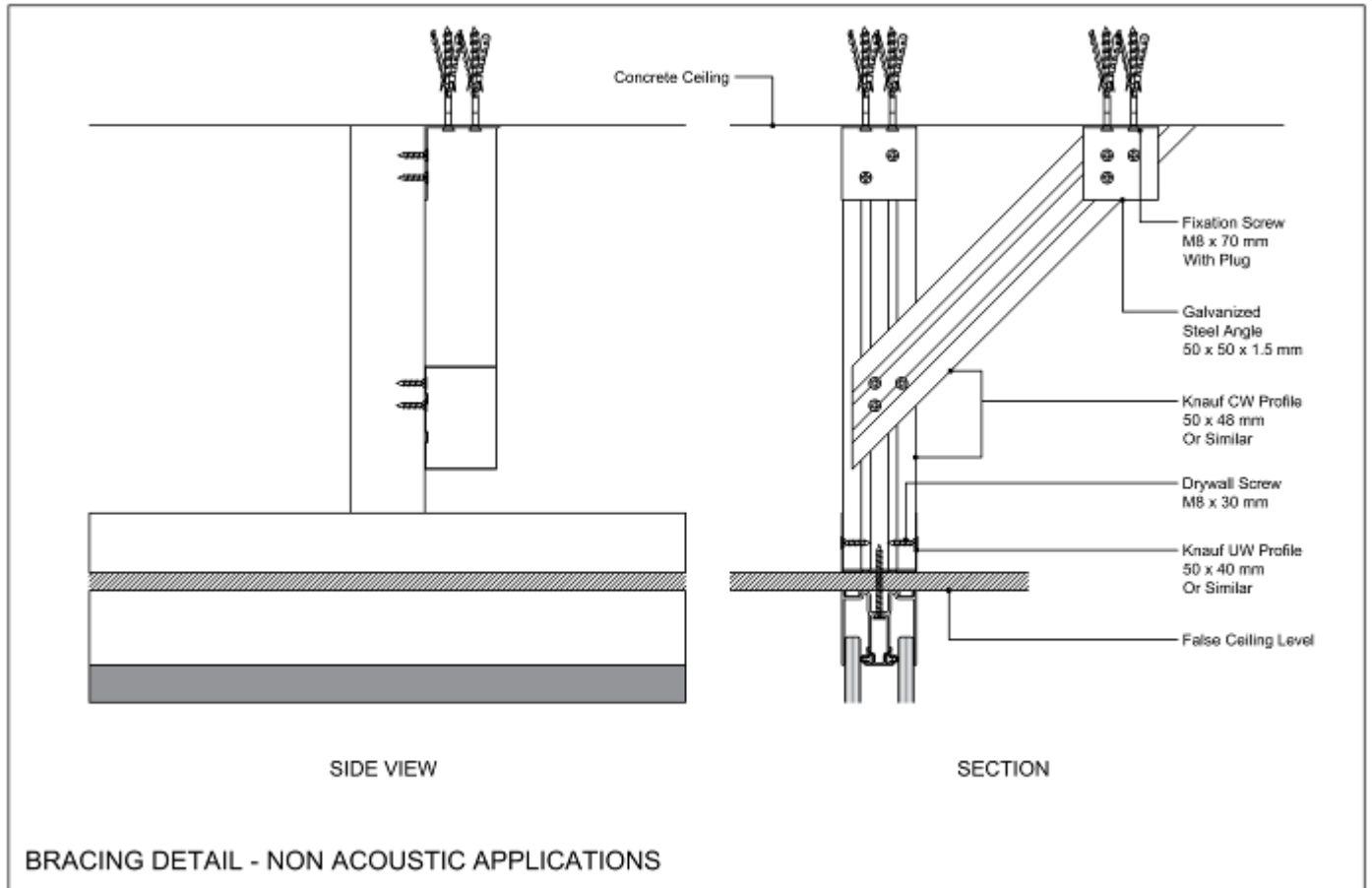
#### **Melamine**

Melamine faced panels are wood-based panels covered with decorative paper impregnated with melamine resin. The designs on the paper range from solid colors to wood and other patterns created for the furniture industry. The surface is then enhanced with a number of finishes offering different tactile sensations.

#### **High Pressure Laminate (HPL)**

High-Pressure Laminate is considered to be one of the most durable decorative surface materials and is available with special performance properties including chemical, fire and wear resistance. Special grades of HPL can be post-formed around curved edges by application of heat and restraint.

HPL is produced by saturating multiple layers of kraft paper with phenolic resin. A layer of printed décor paper is placed on top of the kraft paper before pressing. The resulting sandwich is fused together under heat and pressure (more than 1,000 PSI). Because phenolic and melamine resins are thermoset plastics, the curing process transforms the resin into plastic by a cross-linking process that converts the paper sheets into a single, rigid laminated sheet.



# DAYLIGHT2 DOUBLE GLAZING

---

## 1.0 SYSTEM OVERVIEW

Daylight2 provides frameless double glazing with numerous configurations and design options, offering a complete partition system for glazed and solid paneling.

Daylight2 has the following features:

- Standard profile size of 50 x 28 mm at base and 50 x 50 mm at ceiling.
- Can accommodate glass thicknesses between 10 mm - 13.52 mm.
- Doors can be double glazed or solid, 54 mm thickness.
- Can accommodate solid panels in 17 mm thick MDF, laminated in Veneer, HPL, or Melamine.
- Acoustic insulation from 40 to 45 dB.

## TECHNICAL SERVICES

Technical advice is available from our experienced team. Please contact us to arrange a visit from our sales team to assess your requirements.

## SAMPLE SPECIFICATIONS

The following specifications are for standard products. Custom solutions may provided on a per project basis.

Item	Description
Double Glazed Partition 40 dB	Daylight2® double glazed partitions by Contact Interiors, composed of 2 panes 10 mm tempered clear glass encased in Aluminium profiles with polycarbonate junctions. Partition thickness 50 mm. Solid panels in Veneer, HPL, or Melamine with infill rockwool insulation can be added in any configuration for the installation of power or data receptacles and signage, with total outside thickness 85 mm.
Double Glazed Partition 45 dB	Daylight2® double glazed partitions by Contact Interiors, composed of 2 panes 11.52 mm tempered laminated clear glass (5 mm + 1.52 mm PVB + 5 mm) encased in Aluminium profiles with polycarbonate junctions. Partition thickness 50 mm. Solid panels in Veneer, HPL, or Melamine with infill rockwool insulation can be added in any configuration for the installation of power or data receptacles and signage, with total outside thickness 85 mm.
Double Glazed Door 38 dB	Double glazed door for Daylight2 partitions. Door leaf composed of one panel 6 mm thick tempered glass and one panel 6.76 mm laminated glass (3 mm + 0.76 mm PVB + 3 mm), encased in Aluminium frame. Architrave in extruded Aluminium. Door hardware as per system standard. Door thickness 54 mm.
Solid Single Leaf Door 38 dB	Single leaf solid door for Daylight2 partitions. Door leaf composed of 8 mm thick Veneer / HPL / Melamine faced MDF on softwood and honeycomb substructure with massive wood or PVC edge banding according to selected finish. Architrave in extruded Aluminium. Door hardware as per system standard. Door thickness 54 mm.



## FRAMELESS DOUBLE GLAZED PARTITION TECHNICAL DATA SHEET

# daylight2®

## Seamless Glazing

### DESCRIPTION

Demountable double glazed partition. Solid or glazed panels can be installed in any combination.

### STRUCTURE

- Height of floor channel: 28mm
- Width of floor channel: 50mm
- Height of ceiling channel: 50mm
- Width of ceiling channel: 50mm

### DOUBLE GLAZED PARTITION

- Double glazed partition uses two separate panes of glass.
- The glass is held in extruded Aluminium sections.
- The glass is fitted without the use of silicone.
- Glass junctions are dry jointed in clear double adhesive tape, translucent Polycarbonate profiles, or an extruded Aluminium H profile.
- Standard partition uses 10mm thick fully tempered clear glass.
- High-acoustic version uses 11.52mm thick tempered laminated glass (must be specified).

### SOLID PANELS

- Solid panels for electrical and data connectivity may be installed (must be specified).
- Solid panels are composed of 17mm thick MDF.
- Panels are hung on galvanized steel posts.

### HINGED DOORS

- Glazed doors are 54mm thick double glazed with one pane 6mm fully tempered glass and one pane 6.76mm laminated glass.
- Solid doors are provided in laminated MDF, hollow or solid core, 54mm thick.
- Door architraves are 54 mm thick.
- Doors are provided with a rubber seal encased in the door frame.
- Door hardware is as per project specifications.

### FINISHES

#### ALUMINIUM PROFILE

- Anodized or polyester powder coated finish.

#### GLASS

- Clear, fully or partially frosted.

#### SOLID DOORS AND PANELS

- Melamine laminate.
- Natural Veneer.
- High Pressure Laminate.

### DIMENSIONAL LIMITS

Partition can be installed up to 3000mm in height.

Tolerances for surfaces adjacent to the partition cannot exceed  $\pm 2$ mm.

### ACOUSTICS

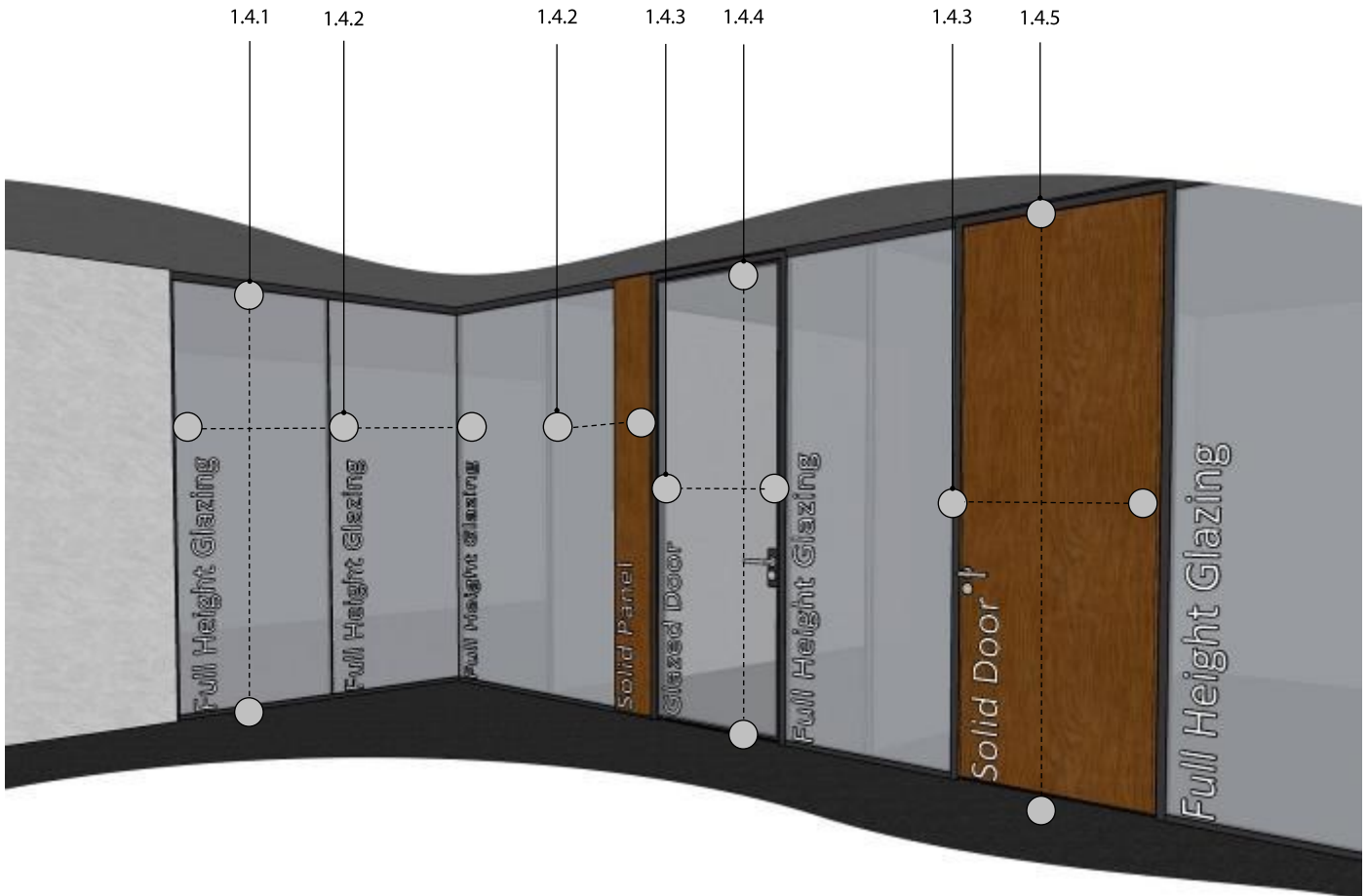
#### STANDARD PARTITION

- Acoustic insulation index weighted as per EN ISO 717-1.  $R_w (C;Ctr) = 40(-2; -4) Db$
- Sound Transmission Class as per ASTM E90.  $STC = 40$

#### HIGH-ACOUSTIC VERSION

- Acoustic insulation index weighted as per EN ISO 717-1.  $R_w (C;Ctr) = 45(-2; -4) Db$
- Sound Transmission Class as per ASTM E90.  $STC = 45$





### TIPS FOR ARCHITECTS AND DESIGNERS

- Plan for glass maneuvering on-site. Limit maximum glass panel width to 1100 mm to allow for vertical and horizontal movement (delivery) while installing.
- The minimum glass panel width is 200 mm.
- For floor to ceiling heights above 2700 mm, it is suggested to use the Daylight2 Classic system.
- Solid doors and panels in Melamine and Natural Veneer can be produced full height up to 2700 mm. Doors and panels in HPL can be produced up to 2400 mm height only, with a matching transom panel for greater heights.
- Place a 30 cm glazed or solid panel between doors on the hinge side and adjacent walls to allow for full opening of doors.

## CONTACT INTERIORS

### DAYLIGHT2

### DOUBLE GLAZING

#### 1.2.1

SHEET

-

SCALE

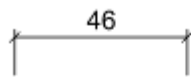
06/08/2022

ISSUED DATE

+202 3335 1675

SUBJECT TO CHANGE WITHOUT NOTICE

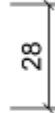
WWW.CONTACT-INTERIORS.COM



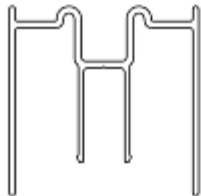
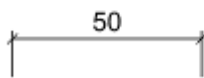
**DD-01**  
BASE CHANNEL



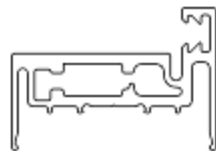
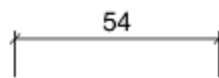
**DD-02**  
OUTSIDE CLIP



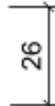
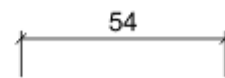
**DD-03**  
DOUBLE GLAZING CLIP



**DD-04**  
HEAD CHANNEL



**DD-05**  
DOOR JAMB



**DD-10**  
DOUBLE GLAZED  
DOOR FRAME





**DD-G1**  
CAPTIVE  
GLAZING BEAD



**DD-G2**  
DOOR GASKET



POLYCARBONATE  
"I"-JOINT



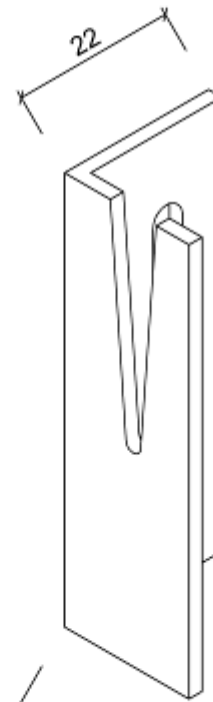
POLYCARBONATE  
CORNER JOINT



POLYCARBONATE  
"T" JOINT



**DD-G3**  
JAMB GASKET



**AC-03**  
PANEL HANGER



**DD-G4**  
DOUBLE GLAZED  
DOOR GASKET



## CONTACT INTERIORS

### DAYLIGHT2

### DOUBLE GLAZING

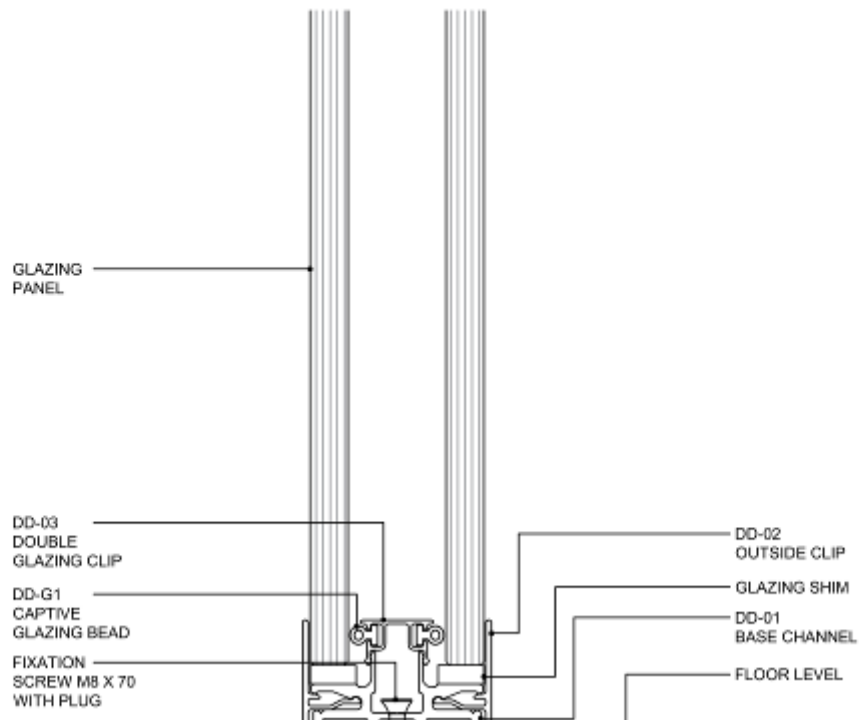
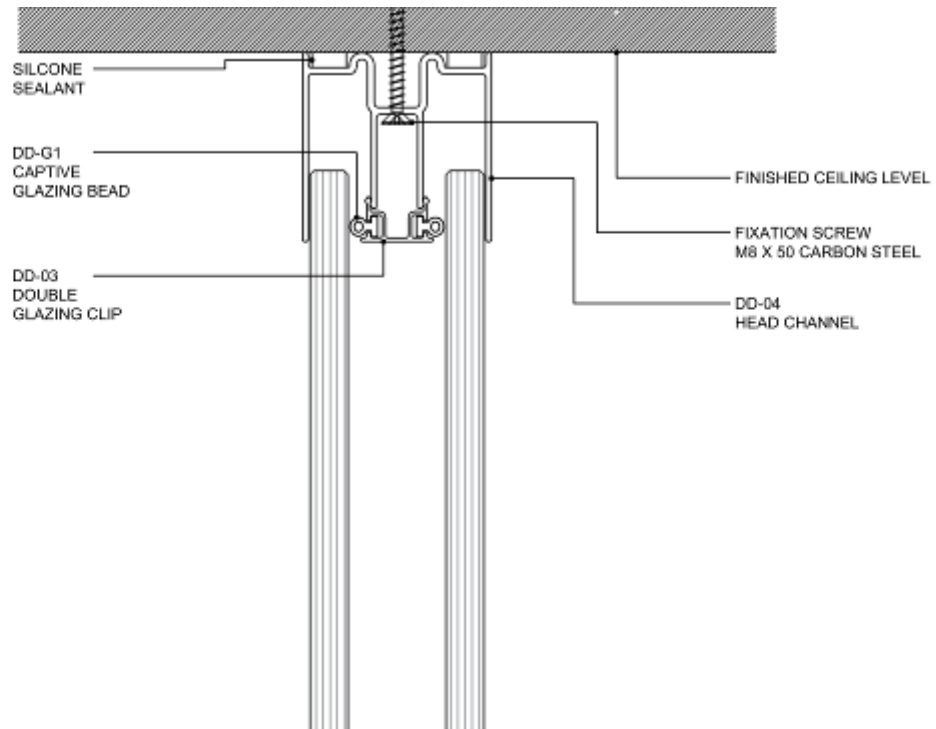
**1.3.2**  
SHEET

1:1 A4  
SCALE

06/08/2022  
ISSUED DATE

+202 3335 1675  
SUBJECT TO CHANGE WITHOUT NOTICE

WWW.CONTACT-INTERIORS.COM



## CONTACT INTERIORS

### DAYLIGHT2

### DOUBLE GLAZING

## DOUBLE GLAZING WALL

### VERTICAL SECTION

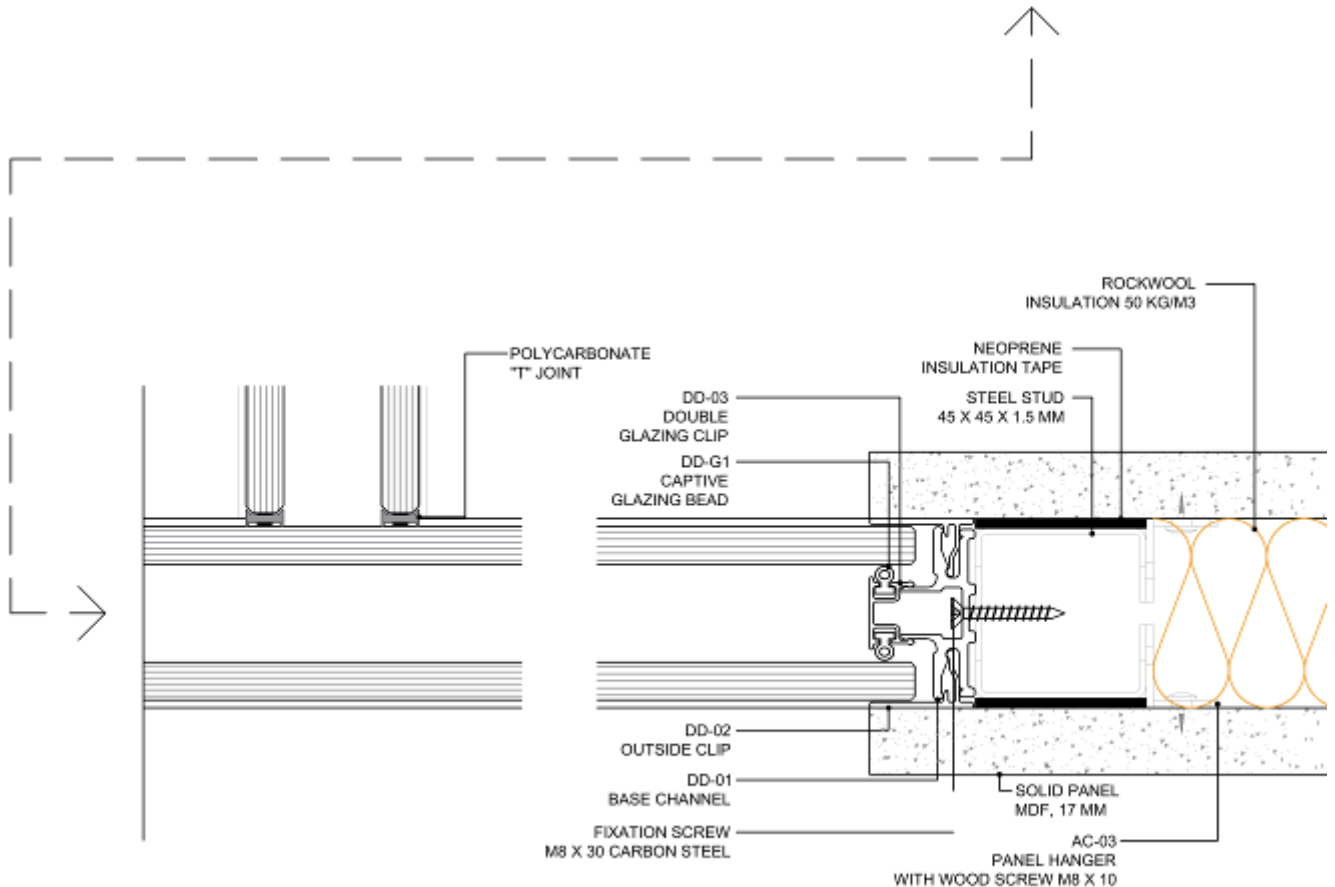
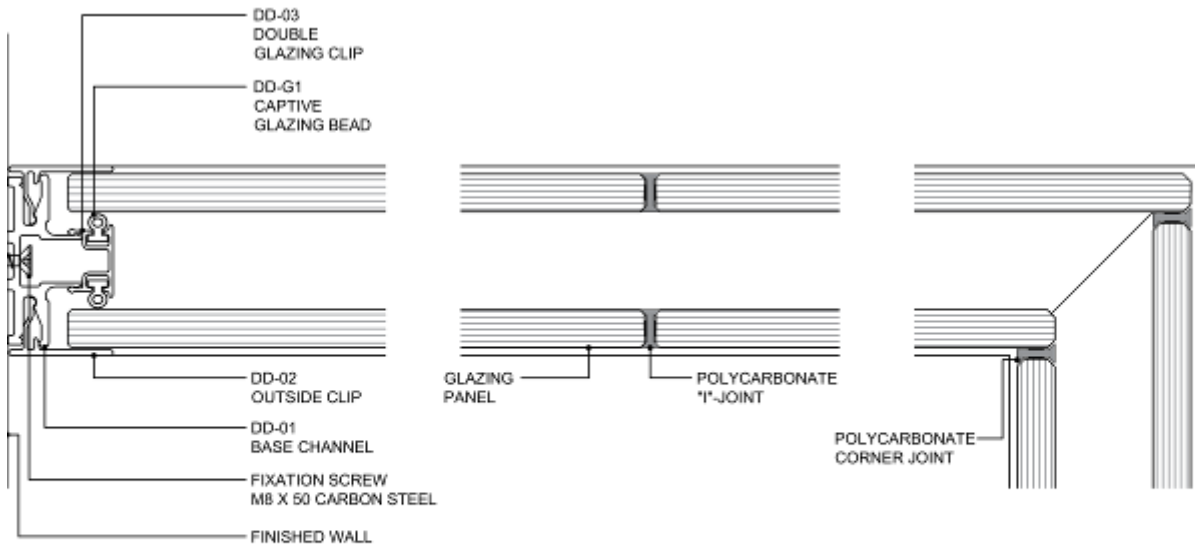
**1.4.1**

1:2 A4

06/08/2022

+202 3335 1675

WWW.CONTACT-INTERIORS.COM



## CONTACT INTERIORS

### DAYLIGHT2

### DOUBLE GLAZING

1.4.2

SHEET

1:2 A4

SCALE

### DOUBLE GLAZING WALL

### HORIZONTAL SECTIONS

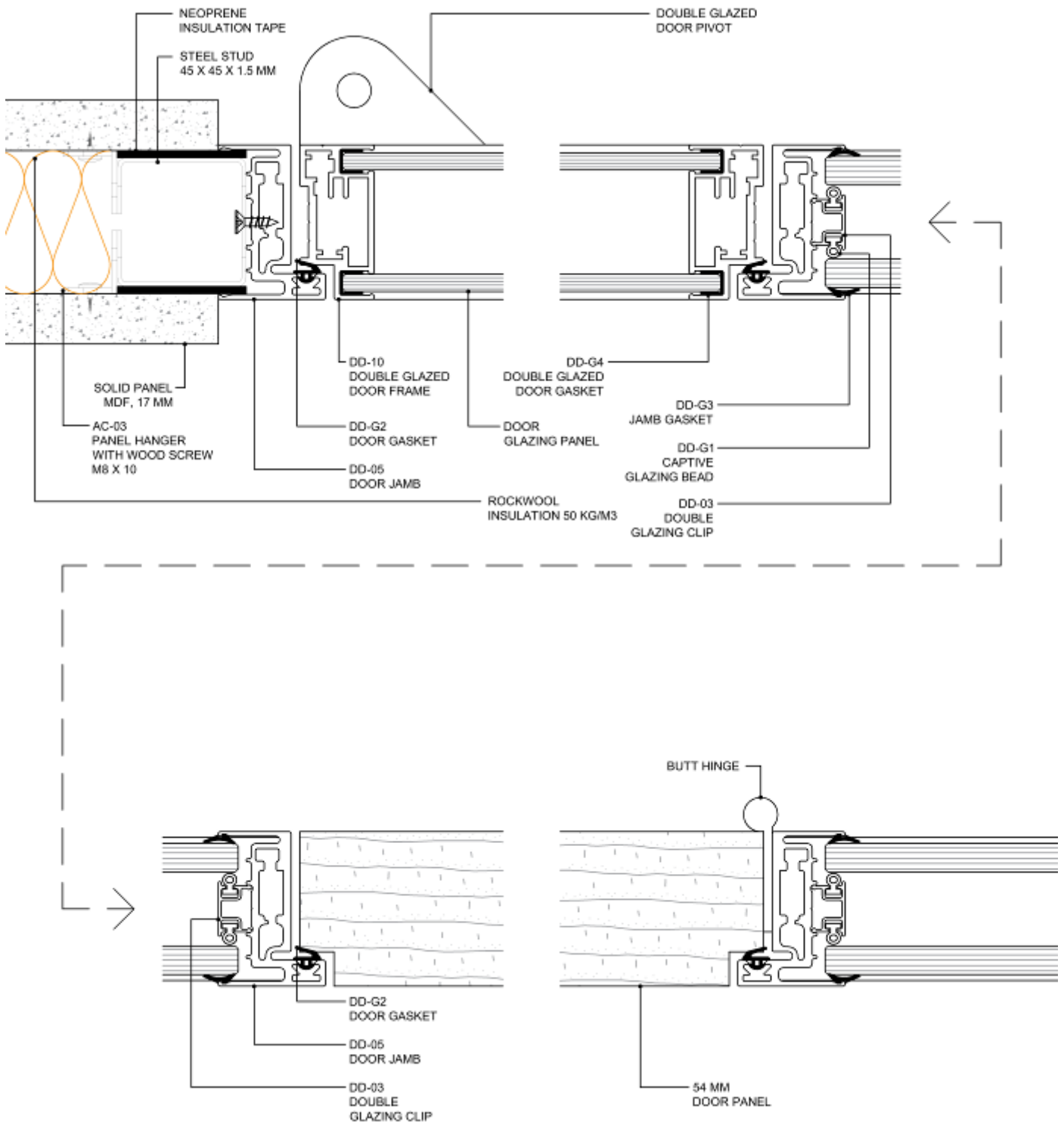
06/08/2022

ISSUED DATE

+202 3335 1675

SUBJECT TO CHANGE WITHOUT NOTICE

WWW.CONTACT-INTERIORS.COM


**CONTACT INTERIORS**
**DAYLIGHT2**
**DOUBLE GLAZING**
**1.4.3**

1:2 A4

SCALE

**DOORS**
**HORIZONTAL SECTIONS**

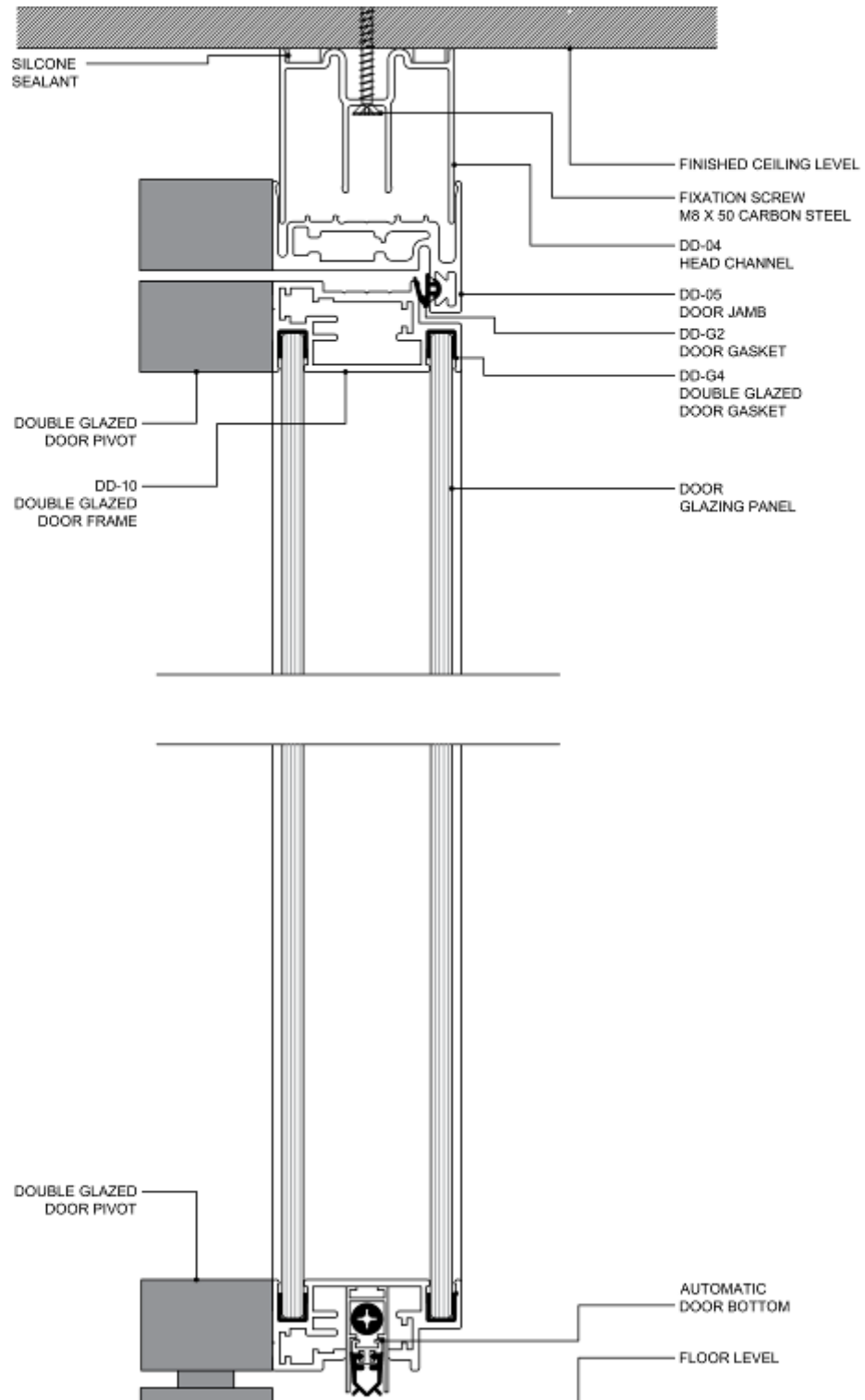
06/08/2022

ISSUED DATE

+202 3335 1675

SUBJECT TO CHANGE WITHOUT NOTICE

[WWW.CONTACT-INTERIORS.COM](http://WWW.CONTACT-INTERIORS.COM)



**CONTACT INTERIORS**

**DAYLIGHT2**

**DOUBLE GLAZING**

**DOUBLE GLAZED DOOR**

**VERTICAL SECTION**

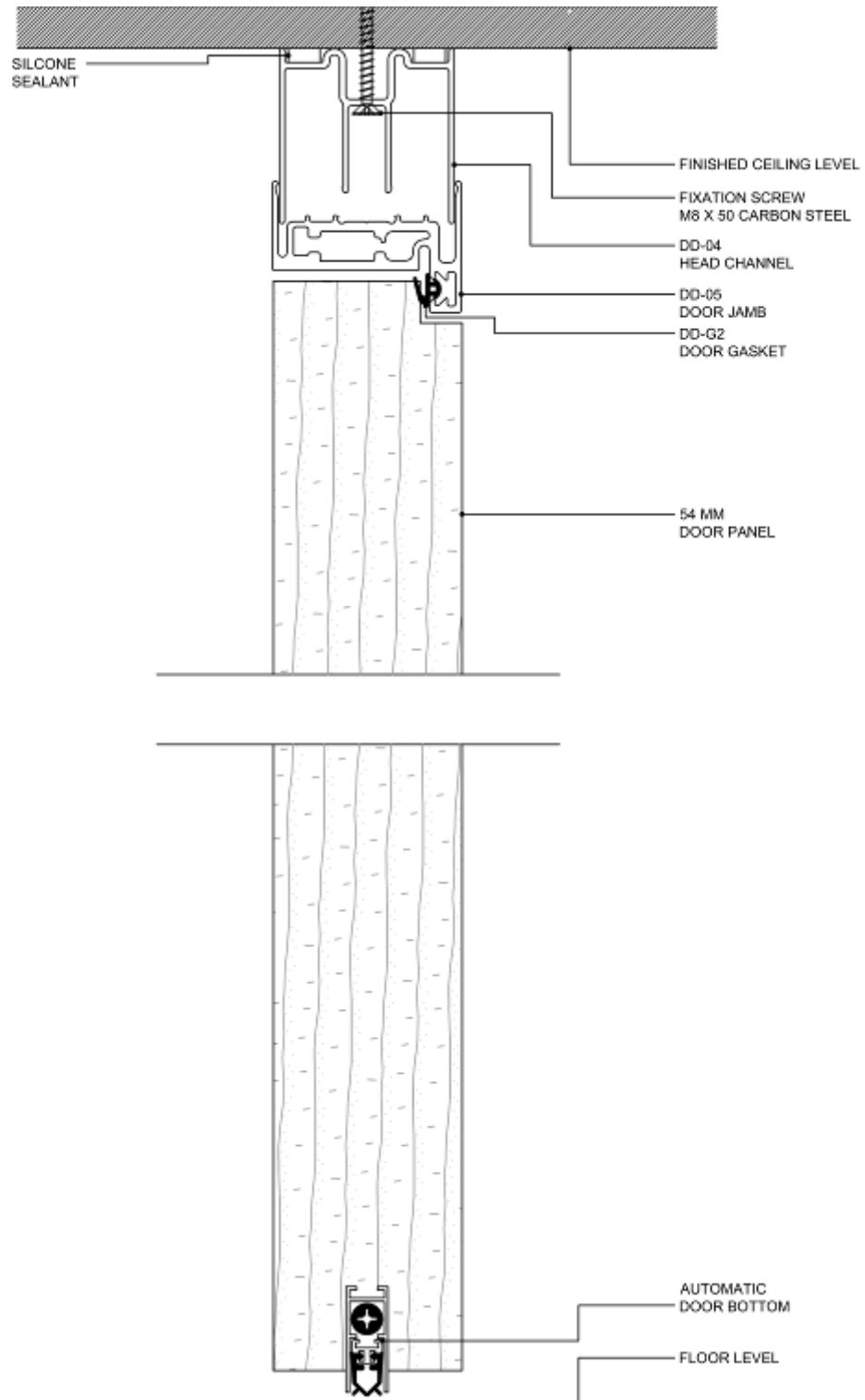
**1.4.4**  
SHEET

1:2 A4  
SCALE

06/08/2022  
ISSUED DATE

+202 3335 1675  
SUBJECT TO CHANGE WITHOUT NOTICE

WWW.CONTACT-INTERIORS.COM



**CONTACT INTERIORS**

**DAYLIGHT2**

**DOUBLE GLAZING**

**WOOD DOOR**

**VERTICAL SECTION**

**1.4.5**

1:2 A4

06/08/2022

+202 3335 1675

WWW.CONTACT-INTERIORS.COM



## DAYLIGHT2 SINGLE GLAZING

---

### 2.0 SYSTEM OVERVIEW

Daylight2 provides frameless single glazing with numerous configurations and design options, offering a complete partition system for glazed and solid paneling.

Daylight2 has the following features:

- Standard profile size of 50 x 28 mm at base and 50 x 50 mm at ceiling.
- Can accommodate glass thicknesses between 10 mm - 13.52 mm.
- Doors can be double glazed or solid, 54 mm thickness.
- Can accommodate solid panels in 17 mm thick MDF, laminated in Veneer, HPL, or Melamine.
- Acoustic insulation from 31 to 38 dB.

### TECHNICAL SERVICES

Technical advice is available from our experienced team. Please contact us to arrange a visit from our sales team to assess your requirements.

### SAMPLE SPECIFICATIONS

The following specifications are for standard products. Custom solutions may provided on a per project basis.

Item	Description
Single Glazed Partition 31 dB	Daylight2® single glazed partitions by Contact Interiors, composed of 1 pane 10 mm tempered clear glass encased in Aluminium profiles with polycarbonate junctions. Partition thickness 50 mm. Solid panels in Veneer, HPL, or Melamine with infill rockwool insulation can be added in any configuration for the installation of power or data receptacles and signage, with total outside thickness 85 mm.
Single Glazed Partition 38 dB	Daylight2® single glazed partitions by Contact Interiors, composed of 1 pane 11.52 mm tempered laminated clear glass (5 mm + 1.52 mm PVB + 5 mm) encased in Aluminium profiles with polycarbonate junctions. Partition thickness 50 mm. Solid panels in Veneer, HPL, or Melamine with infill rockwool insulation can be added in any configuration for the installation of power or data receptacles and signage, with total outside thickness 85 mm.
Single Glazed Door 31 dB	Single glazed door for Daylight2 partitions. Door leaf composed of 10 mm thick tempered glass panel, frameless, hung on Aluminium architrave. Door hardware as per system standard.
Solid Single Leaf Door 35 dB	Single leaf solid door for Daylight2 partitions. Door leaf composed of 8 mm thick Veneer / HPL / Melamine faced MDF on softwood and honeycomb substructure with massive wood or PVC edge banding according to selected finish. Architrave in extruded Aluminium. Door hardware as per system standard. Door thickness 54 mm.





## FRAMELESS SINGLE GLAZED PARTITION TECHNICAL DATA SHEET

# daylight2®

## Seamless Glazing

### DESCRIPTION

Demountable single glazed partition. Solid or glazed panels can be installed in any combination.

### STRUCTURE

- Height of floor channel: 28mm
- Width of floor channel: 50mm
- Height of ceiling channel: 50mm
- Width of ceiling channel: 50mm

### DOUBLE GLAZED PARTITION

- Single glazed partition uses a single pane of glass.
- The glass is held in extruded Aluminium sections.
- The glass is fitted without the use of silicone.
- Glass junctions are dry jointed in clear double adhesive tape, translucent Polycarbonate profiles, or an extruded Aluminium H profile.
- Standard partition uses 10mm thick fully tempered clear glass.
- High-acoustic version uses 11.52mm thick tempered laminated glass (must be specified).

### SOLID PANELS

- Solid panels for electrical and data connectivity may be installed (must be specified).
- Solid panels are composed of 17mm thick MDF.
- Panels are hung on galvanized steel posts.

### HINGED DOORS

- Glazed doors are provided single glazed in same partition glass, frameless.
- Solid doors are provided in laminated MDF, hollow or solid core, 54mm thick.
- Door architraves are 54 mm thick.
- Doors are provided with a rubber seal encased in the door frame.
- Door hardware is as per project specifications.

### FINISHES

#### ALUMINIUM PROFILE

- Anodized or polyester powder coated finish.

#### GLASS

- Clear, fully or partially frosted.

#### SOLID DOORS AND PANELS

- Melamine laminate.
- Natural Veneer.
- High Pressure Laminate.

### DIMENSIONAL LIMITS

Partition can be installed up to 3000mm in height.

Tolerances for surfaces adjacent to the partition cannot exceed  $\pm 2$ mm.

### ACOUSTICS

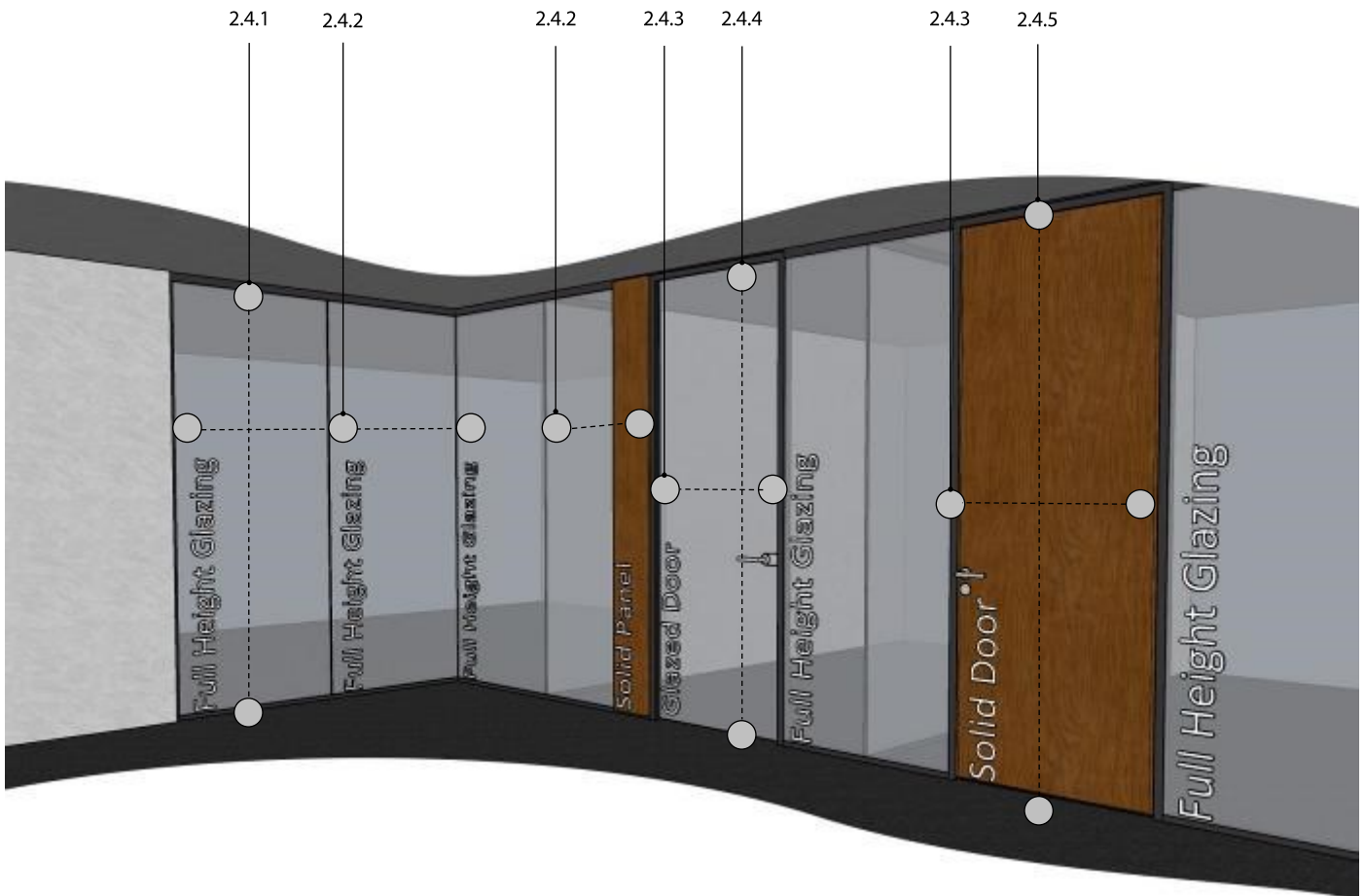
#### STANDARD PARTITION

- Acoustic insulation index weighted as per EN ISO 717-1.  $R_w (C;Ctr) = 31(-2; -4) Db$
- Sound Transmission Class as per ASTM E90.  $STC = 31$

#### HIGH-ACOUSTIC VERSION

- Acoustic insulation index weighted as per EN ISO 717-1.  $R_w (C;Ctr) = 38(-2; -4) Db$
- Sound Transmission Class as per ASTM E90.  $STC = 38$





### TIPS FOR ARCHITECTS AND DESIGNERS

- Plan for glass maneuvering on-site. Limit maximum glass panel width to 1100 mm to allow for vertical and horizontal movement (delivery) while installing.
- The minimum glass panel width is 200 mm.
- For floor to ceiling heights above 2700 mm, it is suggested to use the Daylight2 Classic system.
- Solid doors and panels in Melamine and Natural Veneer can be produced full height up to 2700 mm. Doors and panels in HPL can be produced up to 2400 mm height only, with a matching transom panel for greater heights.
- Place a 30 cm glazed or solid panel between doors on the hinge side and adjacent walls to allow for full opening of doors.

## CONTACT INTERIORS

### DAYLIGHT2

### SINGLE GLAZING

#### 2.2.1

SHEET

-

SCALE

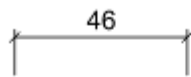
06/08/2022

ISSUED DATE

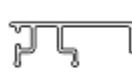
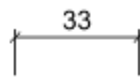
+202 3335 1675

SUBJECT TO CHANGE WITHOUT NOTICE

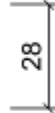
WWW.CONTACT-INTERIORS.COM



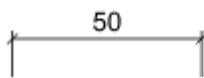
**DD-01**  
BASE CHANNEL



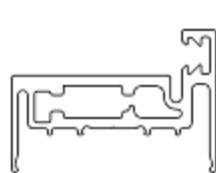
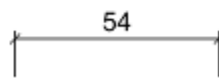
**DD-08**  
SINGLE  
GLAZING CLIP



**DD-03**  
DOUBLE GLAZING CLIP



**DD-04**  
HEAD CHANNEL



**DD-05**  
DOOR JAMB



**DD-09**  
CLIP IN SINGLE  
GLAZED DOOR STOP

**CONTACT INTERIORS**

**DAYLIGHT2**

**SINGLE GLAZING**

**STANDARD SYSTEM PROFILES**

**2.3.1**

1:2 A4

06/08/2022

+202 3335 1675

WWW.CONTACT-INTERIORS.COM

28 SHEET

SCALE

ISSUED DATE

SUBJECT TO CHANGE WITHOUT NOTICE



**DD-G1**  
CAPTIVE  
GLAZING BEAD



**DD-G2**  
DOOR GASKET



POLYCARBONATE  
"I"-JOINT



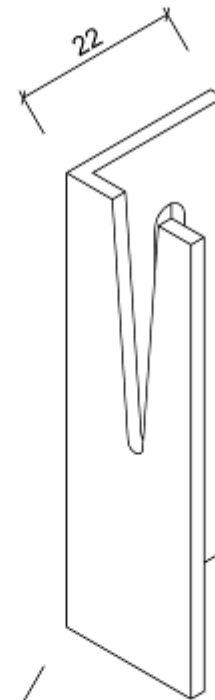
POLYCARBONATE  
CORNER JOINT



POLYCARBONATE  
"T" JOINT



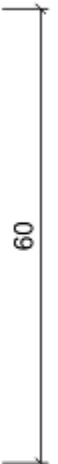
**DD-G3**  
JAMB GASKET



**AC-03**  
PANEL HANGER



**DD-G4**  
DOUBLE GLAZED  
DOOR GASKET



## CONTACT INTERIORS

### DAYLIGHT2

### SINGLE GLAZING

#### 2.3.2

SHEET

1:1 A4

SCALE

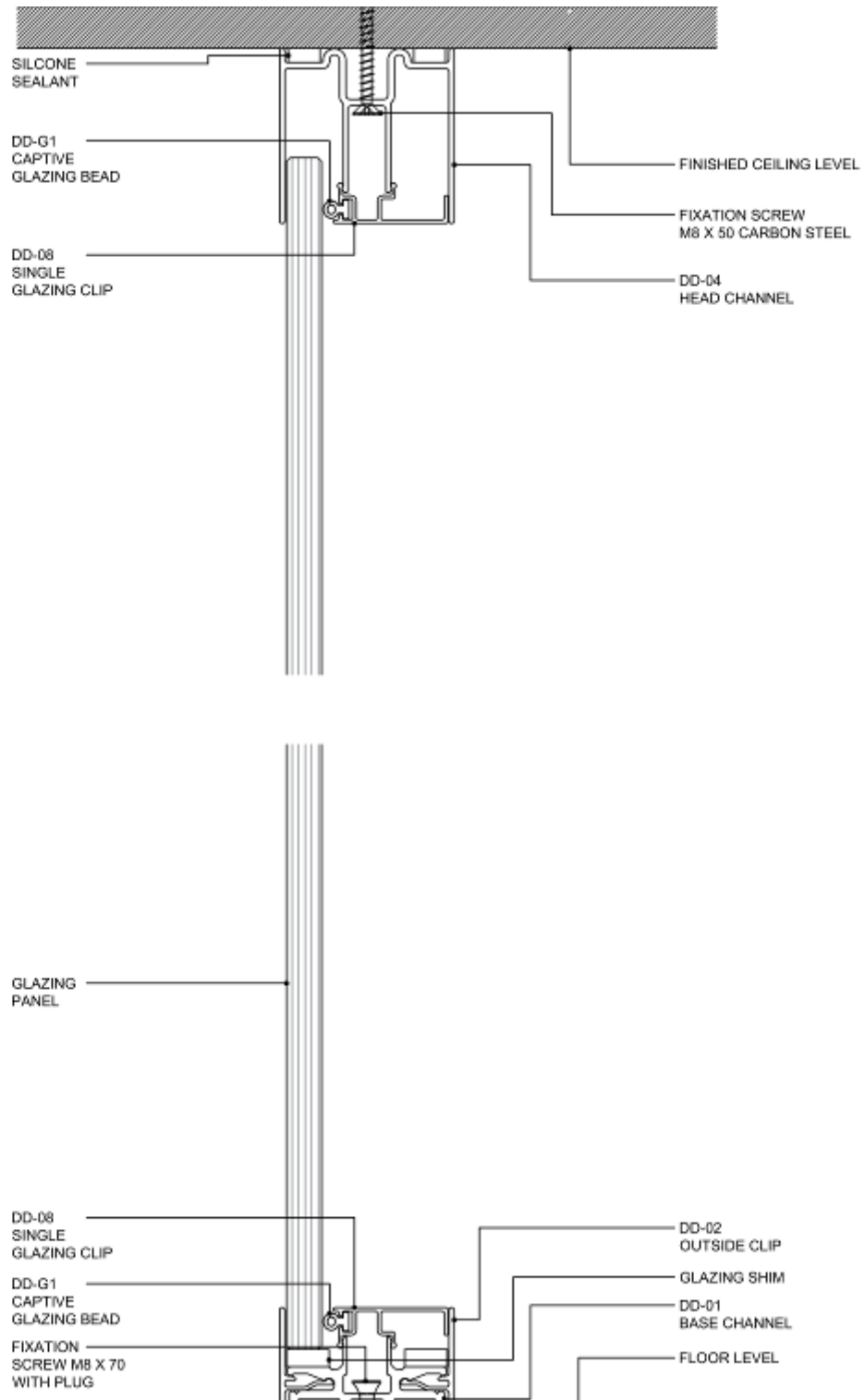
06/08/2022

ISSUED DATE

+202 3335 1675

SUBJECT TO CHANGE WITHOUT NOTICE

WWW.CONTACT-INTERIORS.COM



## CONTACT INTERIORS

### DAYLIGHT2

### SINGLE GLAZING

### SINGLE GLAZING WALL

### VERTICAL SECTION

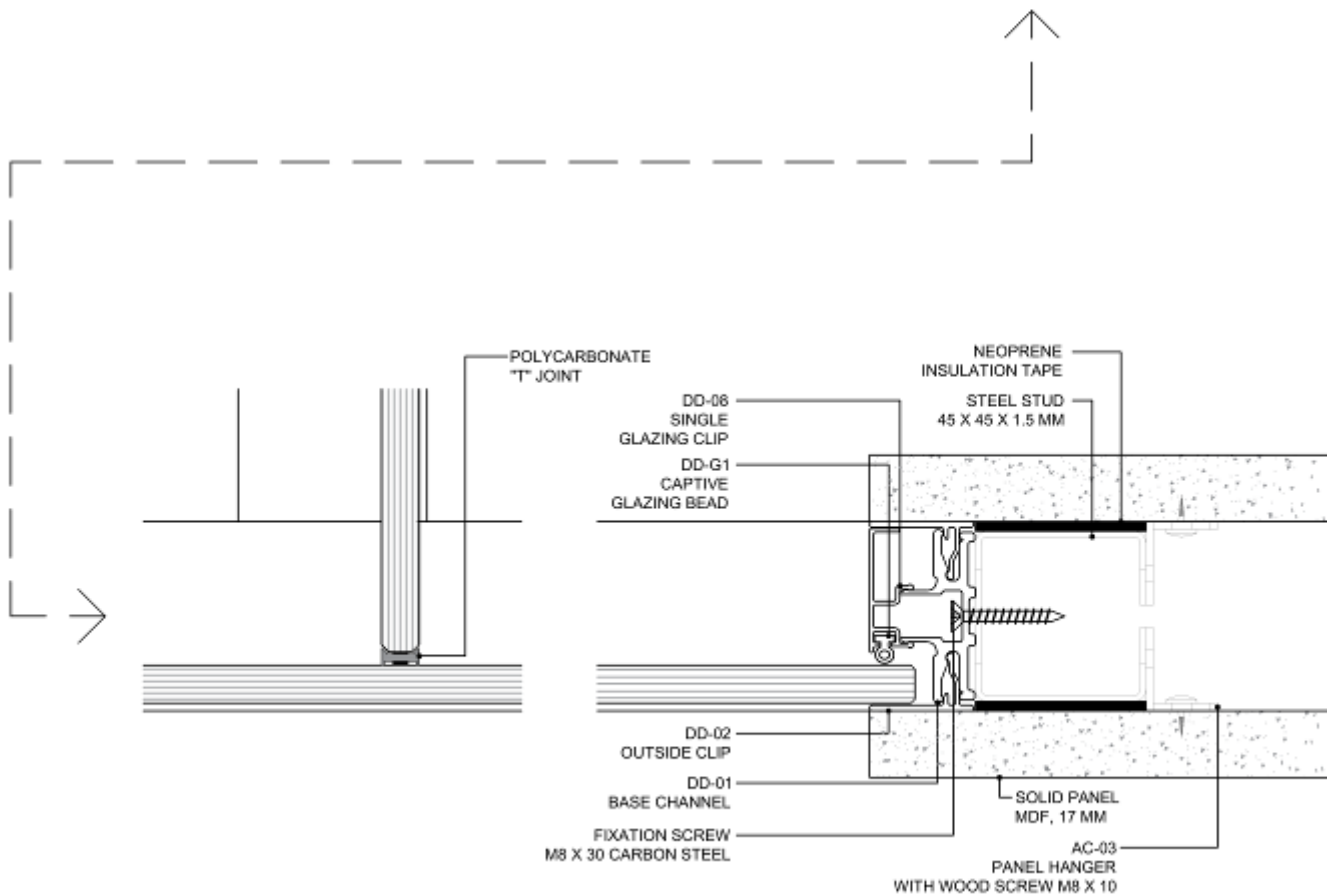
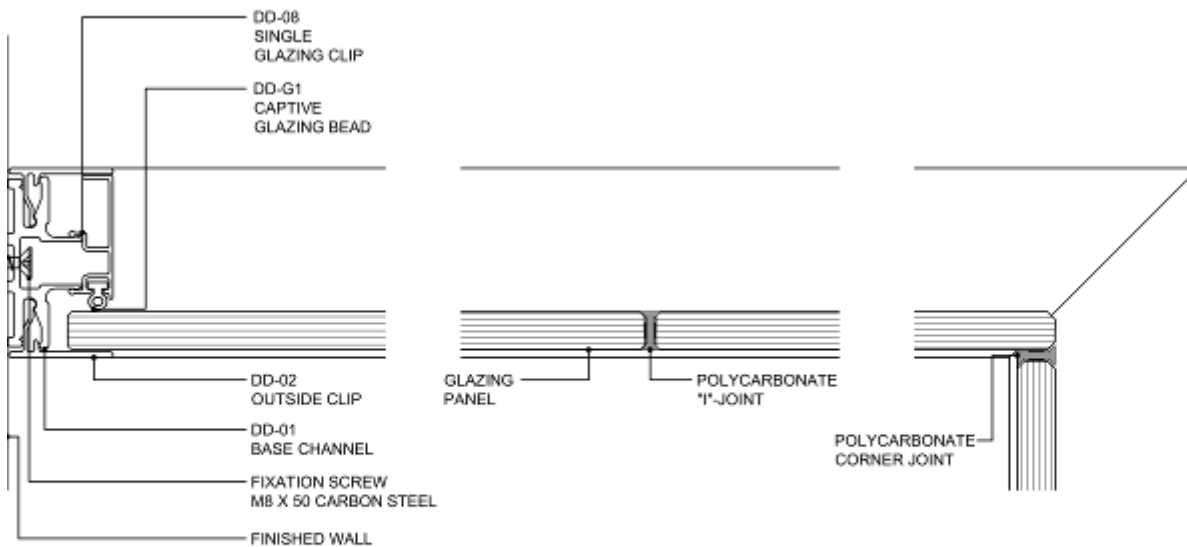
**2.4.1**

1:2 A4

06/08/2022

+202 3335 1675

WWW.CONTACT-INTERIORS.COM



## CONTACT INTERIORS

### DAYLIGHT2

### SINGLE GLAZING

#### 2.4.2

SHEET

1:2 A4

SCALE

### SINGLE GLAZING WALL

### HORIZONTAL SECTIONS

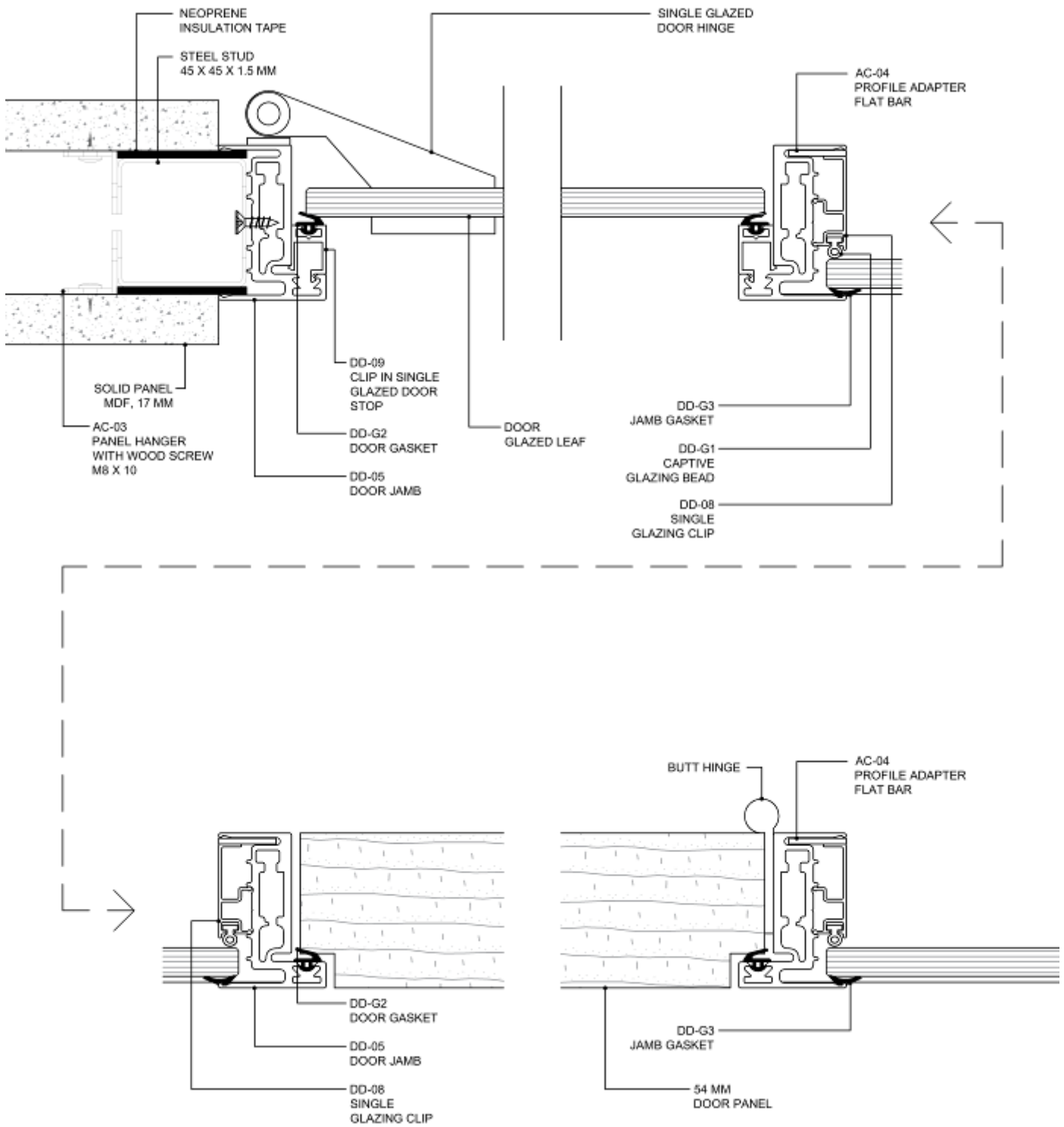
06/08/2022

ISSUED DATE

+202 3335 1675

SUBJECT TO CHANGE WITHOUT NOTICE

WWW.CONTACT-INTERIORS.COM



## CONTACT INTERIORS

### DAYLIGHT2

### SINGLE GLAZING

#### 2.4.3

1:2 A4

### DOORS

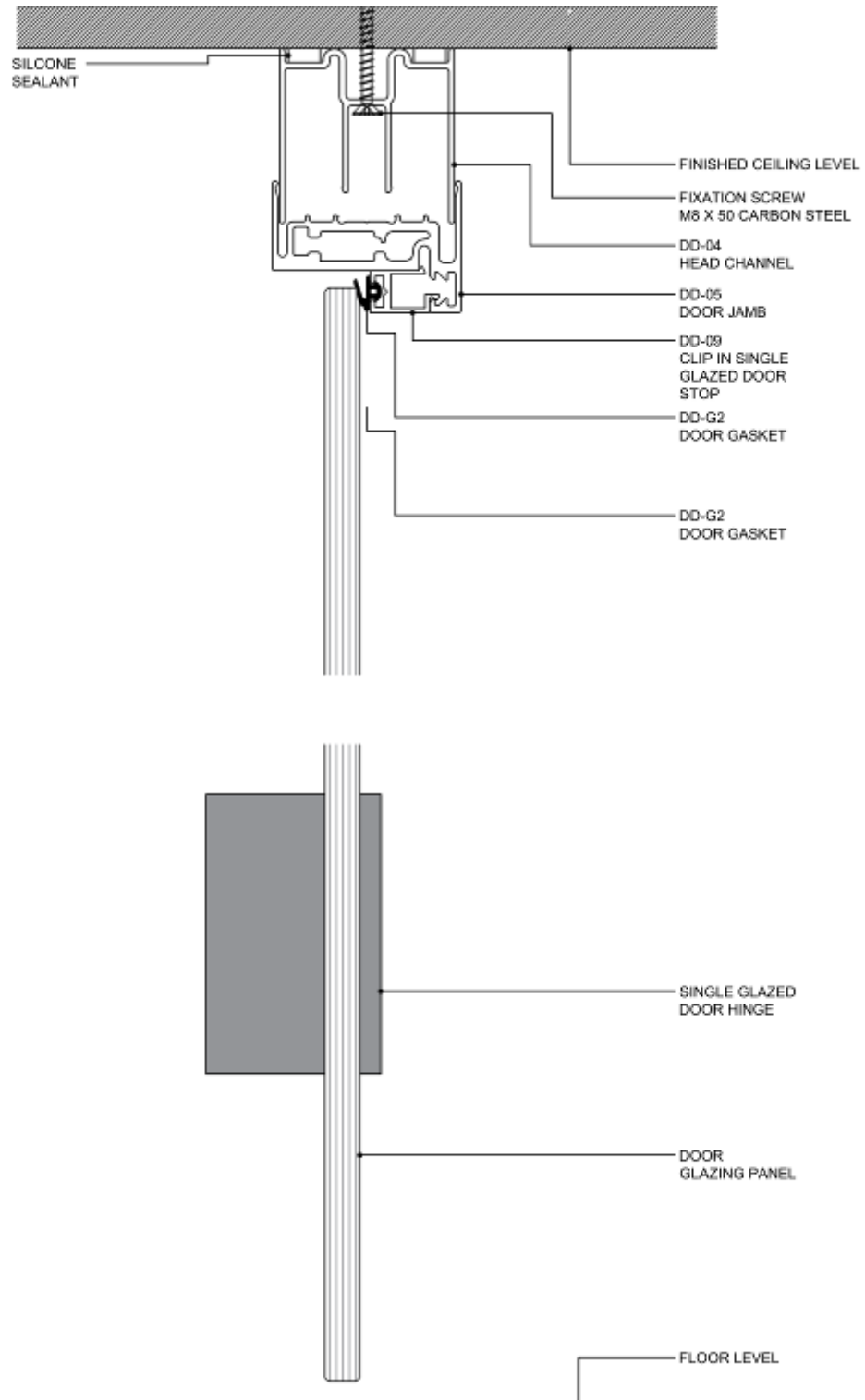
### HORIZONTAL SECTIONS

06/08/2022

+202 3335 1675

WWW.CONTACT-INTERIORS.COM





**CONTACT INTERIORS**

**DAYLIGHT2**

**SINGLE GLAZING**

**2.4.4**

SHEET

1:2 A4

SCALE

**SINGLE GLAZED DOOR**

**VERTICAL SECTION**

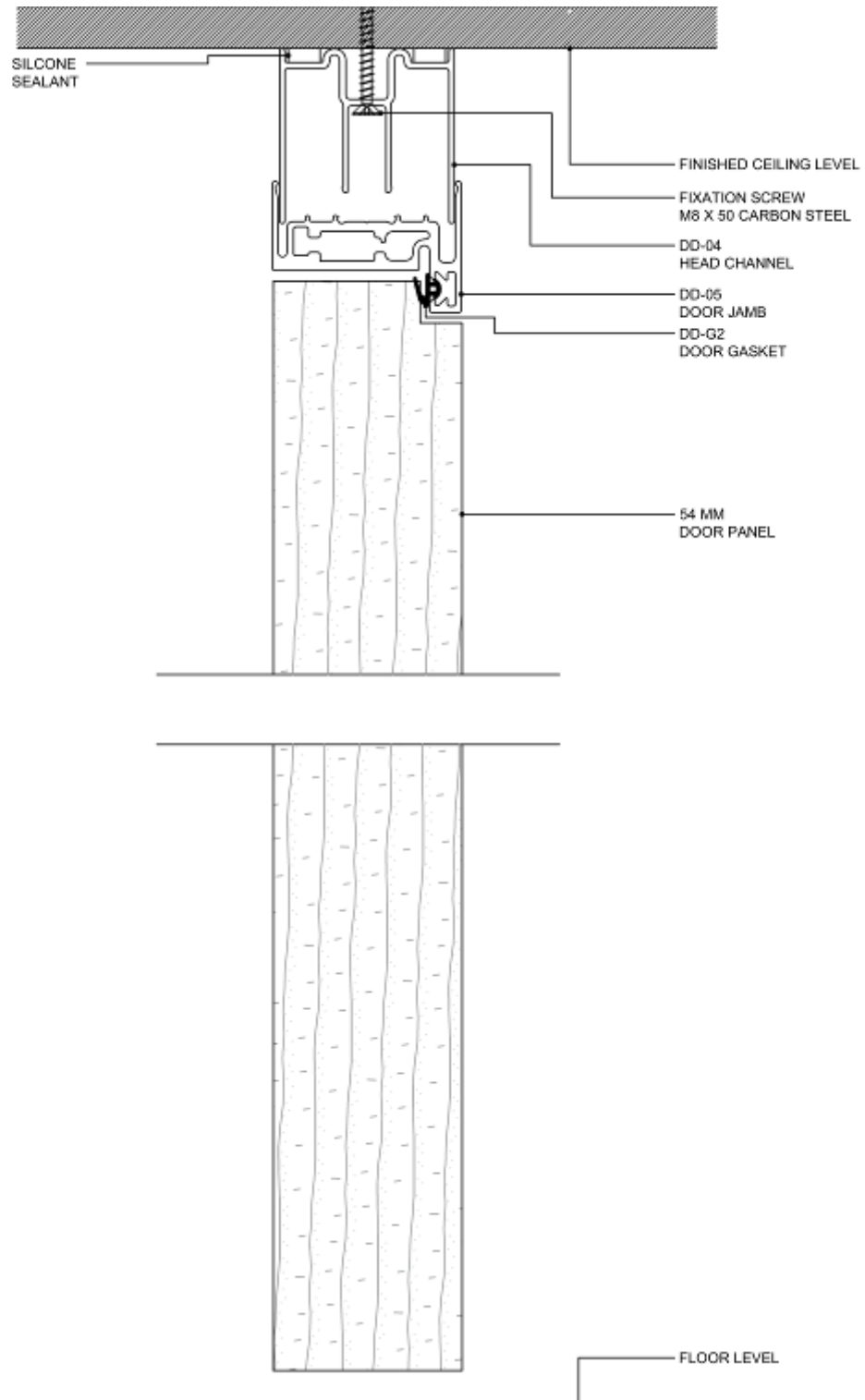
06/08/2022

ISSUED DATE

+202 3335 1675

SUBJECT TO CHANGE WITHOUT NOTICE

WWW.CONTACT-INTERIORS.COM



**CONTACT INTERIORS**

**DAYLIGHT2**

**SINGLE GLAZING**

**WOOD DOOR**

**VERTICAL SECTION**

**2.4.5**

1:2 A4

06/08/2022

+202 3335 1675

WWW.CONTACT-INTERIORS.COM



## DAYLIGHT2 CLASSIC DOUBLE GLAZING

---

### 3.0 SYSTEM OVERVIEW

Daylight2 provides framed double glazing with numerous configurations and design options, offering a complete partition system for glazed and solid paneling.

Daylight2 has the following features:

- Standard profile size of 50 x 28 mm at base and 50 x 50 mm at ceiling.
- Post/Transom profile size 37 x 50 mm can be used vertically or horizontally.
- Can accommodate glass thicknesses between 10 mm - 13.52 mm.
- Doors can be double glazed or solid, 54 mm thickness.
- Can accommodate solid panels in 17 mm thick MDF, laminated in Veneer, HPL, or Melamine.
- Acoustic insulation from 40 to 45 dB.

### TECHNICAL SERVICES

Technical advice is available from our experienced team. Please contact us to arrange a visit from our sales team to assess your requirements.

### SAMPLE SPECIFICATIONS

Item	Description
Double Glazed Partition 40 dB	Daylight2® classic double glazed partitions by Contact Interiors, composed of 2 panes 10 mm tempered clear glass encased in Aluminium profiles, with vertical and horizontal divisions achieved using post/transom profile. Partition thickness 50 mm. Solid panels in Veneer, HPL, or Melamine with infill rockwool insulation can be added in any configuration for the installation of power or data receptacles and signage, with total outside thickness 85 mm.
Double Glazed Partition 45 dB	Daylight2® double glazed partitions by Contact Interiors, composed of 2 panes 11.52 mm tempered laminated clear glass (5 mm + 1.52 mm PVB + 5 mm) encased in Aluminium profiles, with vertical and horizontal divisions achieved using post/transom profile. Partition thickness 50 mm. Solid panels in Veneer, HPL, or Melamine with infill rockwool insulation can be added in any configuration for the installation of power or data receptacles and signage, with total outside thickness 85 mm.
Double Glazed Door 38 dB	Double glazed door for Daylight2 partitions. Door leaf composed of one panel 6 mm thick tempered glass and one panel 6.76 mm laminated glass (3 mm + 0.76 mm PVB + 3 mm), encased in Aluminium frame. Architrave in extruded Aluminium. Door hardware as per system standard. Door thickness 54 mm.
Solid Single Leaf Door 38 dB	Single leaf solid door for Daylight2 partitions. Door leaf composed of 8 mm thick Veneer / HPL / Melamine faced MDF on softwood and honeycomb substructure with massive wood or PVC edge banding according to selected finish. Architrave in extruded Aluminium. Door hardware as per system standard. Door thickness 54 mm.



## FRAMED DOUBLE GLAZED PARTITION TECHNICAL DATA SHEET

# daylight2®

## Seamless Glazing

### DESCRIPTION

Demountable double glazed partition. Solid or glazed panels can be installed in any combination.

### STRUCTURE

- Height of floor channel: 28mm
- Width of floor channel: 50mm
- Height of ceiling channel: 50mm
- Width of ceiling channel: 50mm

### DOUBLE GLAZED PARTITION

- Double glazed partition uses two separate panes of glass.
- The glass is held in extruded Aluminium sections.
- The glass is fitted without the use of silicone.
- Glass junctions are achieved using mullions and transoms in extruded Aluminium.
- Standard partition uses 10mm thick fully tempered clear glass.
- High-acoustic version uses 11.52mm thick tempered laminated glass (must be specified).

### SOLID PANELS

- Solid panels for electrical and data connectivity may be installed (must be specified).
- Solid panels are composed of 17mm thick MDF.
- Panels are hung on galvanized steel posts.

### HINGED DOORS

- Glazed doors are 54mm thick double glazed with one pane 6mm fully tempered glass and one pane 6.76mm laminated glass.
- Solid doors are provided in laminated MDF, hollow or solid core, 54mm thick.
- Door architraves are 54 mm thick.
- Doors are provided with a rubber seal encased in the door frame.
- Door hardware is as per project specifications.

### FINISHES

#### ALUMINIUM PROFILE

- Anodized or polyester powder coated finish.

#### GLASS

- Clear, fully or partially frosted.

#### SOLID DOORS AND PANELS

- Melamine laminate.
- Natural Veneer.
- High Pressure Laminate.

### DIMENSIONAL LIMITS

Partition can be installed up to 4500mm in height.

Tolerances for surfaces adjacent to the partition cannot exceed  $\pm 2$ mm.

### ACOUSTICS

#### STANDARD PARTITION

- Acoustic insulation index weighted as per EN ISO 717-1.  $R_w (C;Ctr) = 40(-2; -4) Db$
- Sound Transmission Class as per ASTM E90.  $STC = 40$

#### HIGH-ACOUSTIC VERSION

- Acoustic insulation index weighted as per EN ISO 717-1.  $R_w (C;Ctr) = 45(-2; -4) Db$
- Sound Transmission Class as per ASTM E90.  $STC = 45$





### TIPS FOR ARCHITECTS AND DESIGNERS

- Plan for glass maneuvering on-site. Limit maximum glass panel width to 1100 mm to allow for vertical and horizontal movement (delivery) while installing.
- The minimum glass panel width is 200 mm.
- For floor to ceiling heights above 2700 mm, it is suggested to use the Daylight2 Classic system.
- Solid doors and panels in Melamine and Natural Veneer can be produced full height up to 2700 mm. Doors and panels in HPL can be produced up to 2400 mm height only, with a matching transom panel for greater heights.
- Place a 30 cm glazed or solid panel between doors on the hinge side and adjacent walls to allow for full opening of doors.

## CONTACT INTERIORS

### DAYLIGHT2

### DOUBLE GLAZING

#### 3.2.1

SHEET

-

SCALE

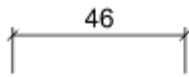
06/08/2022

ISSUED DATE

+202 3335 1675

SUBJECT TO CHANGE WITHOUT NOTICE

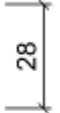
WWW.CONTACT-INTERIORS.COM



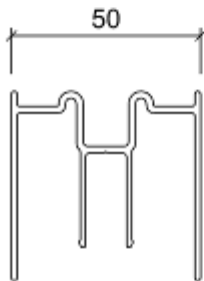
**DD-01**  
BASE CHANNEL



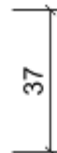
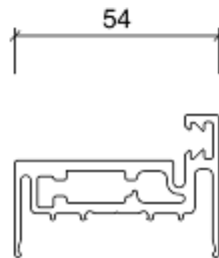
**DD-02**  
OUTSIDE CLIP



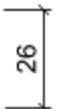
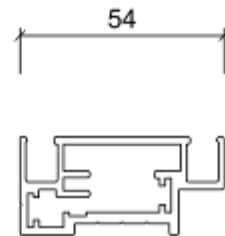
**DD-03**  
DOUBLE GLAZING CLIP



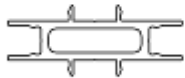
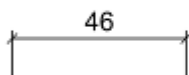
**DD-04**  
HEAD CHANNEL



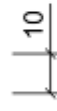
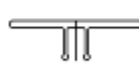
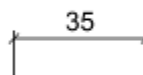
**DD-05**  
DOOR JAMB



**DD-10**  
DOUBLE GLAZED  
DOOR FRAME



**DD-13**  
TRANSOM/POST



**DD-14**  
POST CLIP-  
IN COVER

**CONTACT INTERIORS**  
**DAYLIGHT2 CLASSIC**  
**DOUBLE GLAZING**

**STANDARD SYSTEM PROFILES**

**3.3.1**

1:2 A4

06/08/2022

+202 3335 1675

WWW.CONTACT-INTERIORS.COM





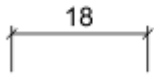
**DD-G1**  
CAPTIVE  
GLAZING BEAD



**DD-G2**  
DOOR GASKET



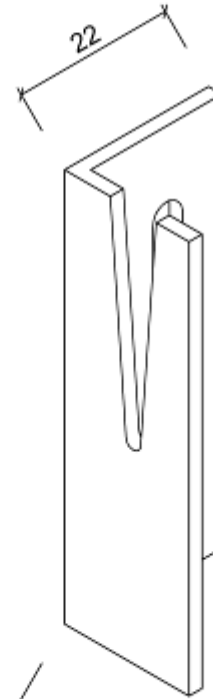
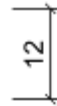
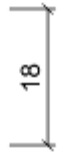
POLYCARBONATE  
"I"-JOINT



**DD-12**  
GLAZING  
CORNER



**AC-05**  
H/T  
CONNECTOR



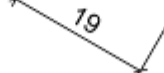
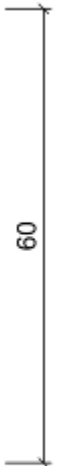
**AC-03**  
PANEL HANGER



**DD-G4**  
DOUBLE GLAZED  
DOOR GASKET



**DD-G3**  
JAMB GASKET



**CONTACT INTERIORS**  
**DAYLIGHT2 CLASSIC**  
**DOUBLE GLAZING**

**SYSTEM ACCESSORIES**

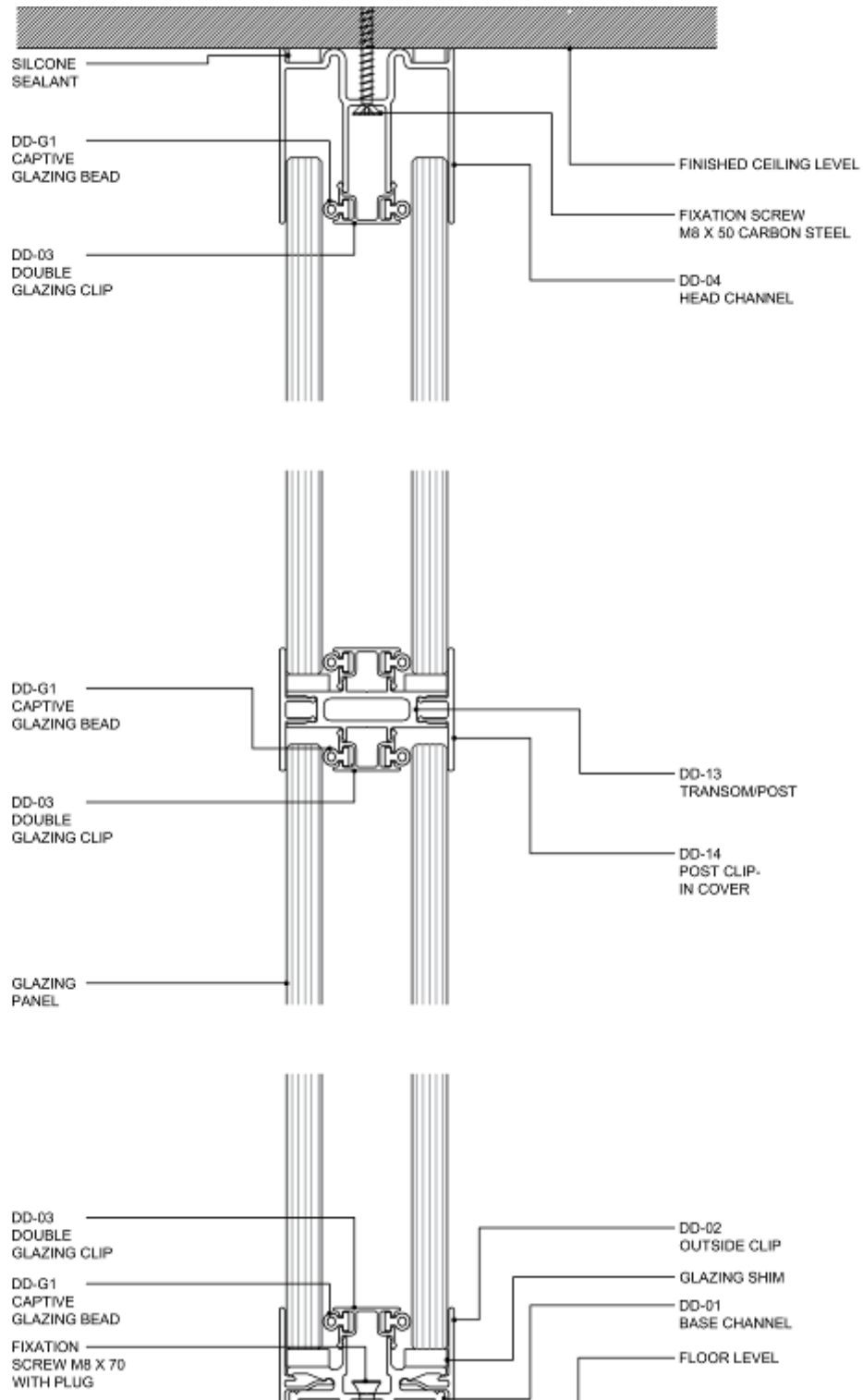
**3.3.2**  
SHEET

1:1 A4  
SCALE

06/08/2022  
ISSUED DATE

+202 3335 1675  
SUBJECT TO CHANGE WITHOUT NOTICE

WWW.CONTACT-INTERIORS.COM

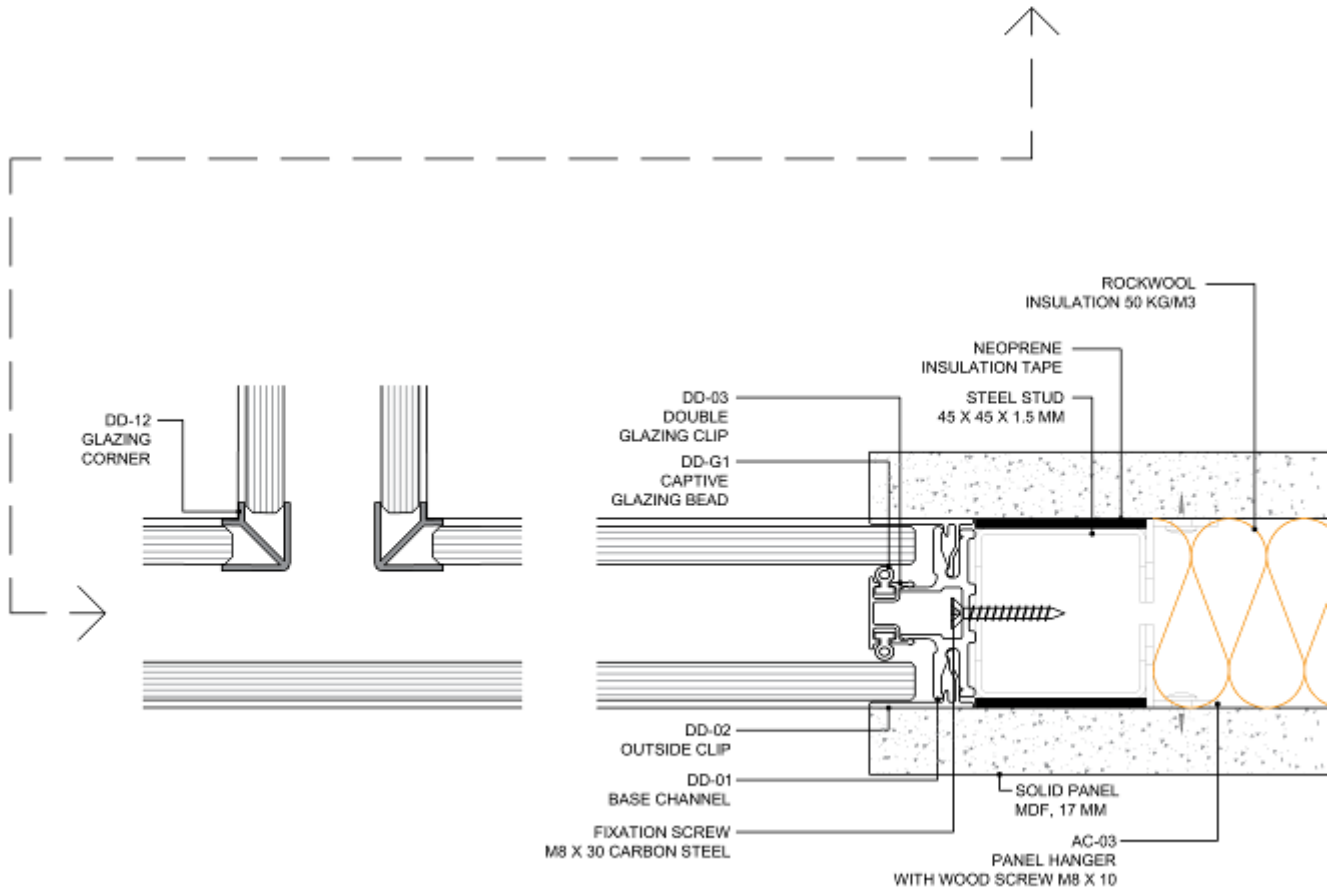
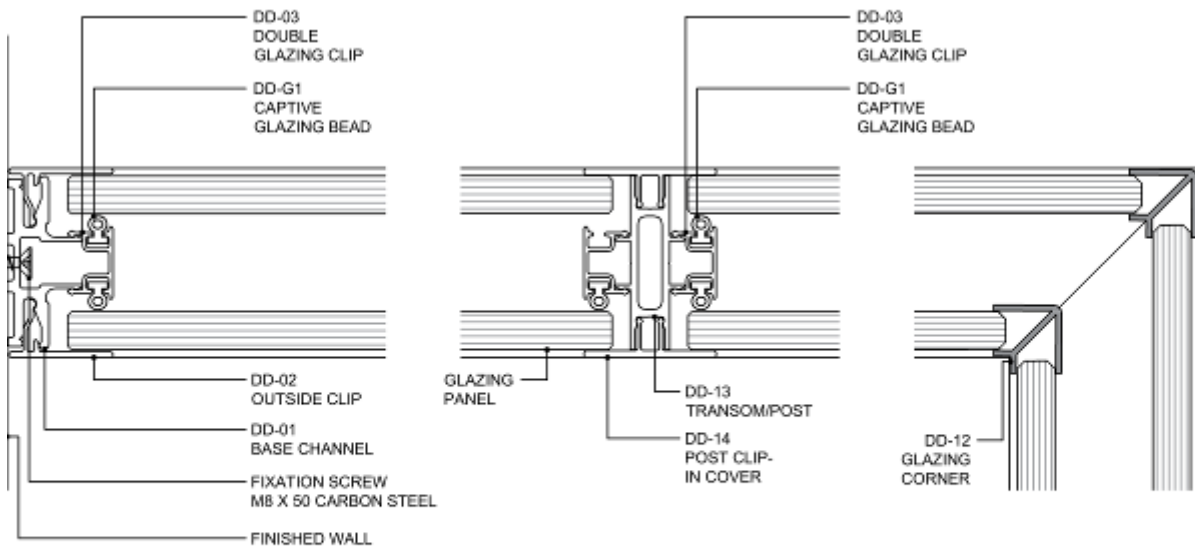

**CONTACT INTERIORS**
**DAYLIGHT2 CLASSIC**
**DOUBLE GLAZING**
**DOUBLE GLAZING WALL**
**VERTICAL SECTION**
**1.4.1**

1:2 A4

06/08/2022

+202 3335 1675

[WWW.CONTACT-INTERIORS.COM](http://WWW.CONTACT-INTERIORS.COM)



**CONTACT INTERIORS**  
**DAYLIGHT2 CLASSIC**  
**DOUBLE GLAZING**

**1.4.2**  
SHEET

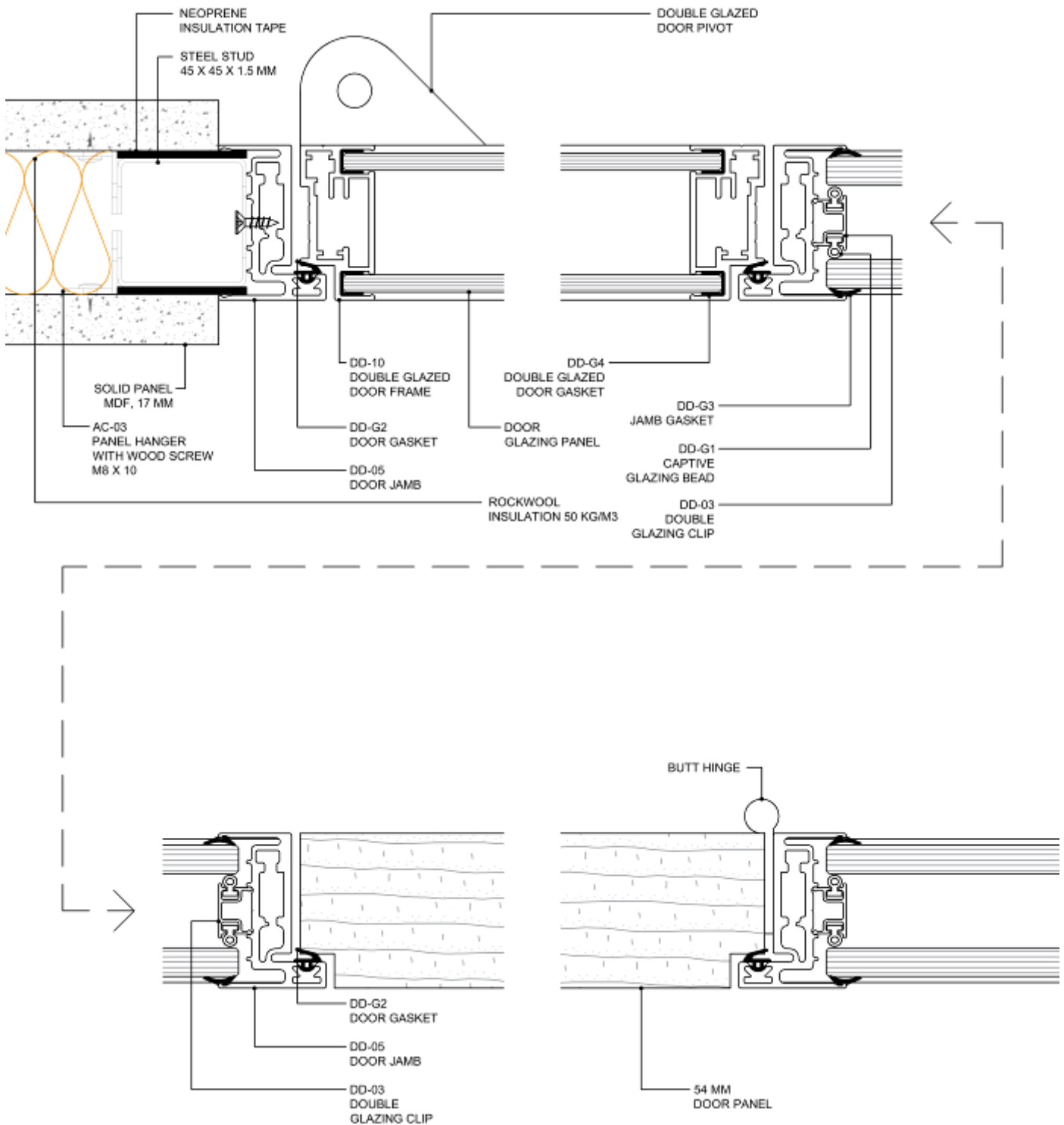
1:2 A4  
SCALE

**DOUBLE GLAZING WALL**  
**HORIZONTAL SECTIONS**

06/08/2022  
ISSUED DATE

+202 3335 1675  
SUBJECT TO CHANGE WITHOUT NOTICE

WWW.CONTACT-INTERIORS.COM



**CONTACT INTERIORS**  
**DAYLIGHT2 CLASSIC**  
**DOUBLE GLAZING**

**DOORS**  
**HORIZONTAL SECTIONS**

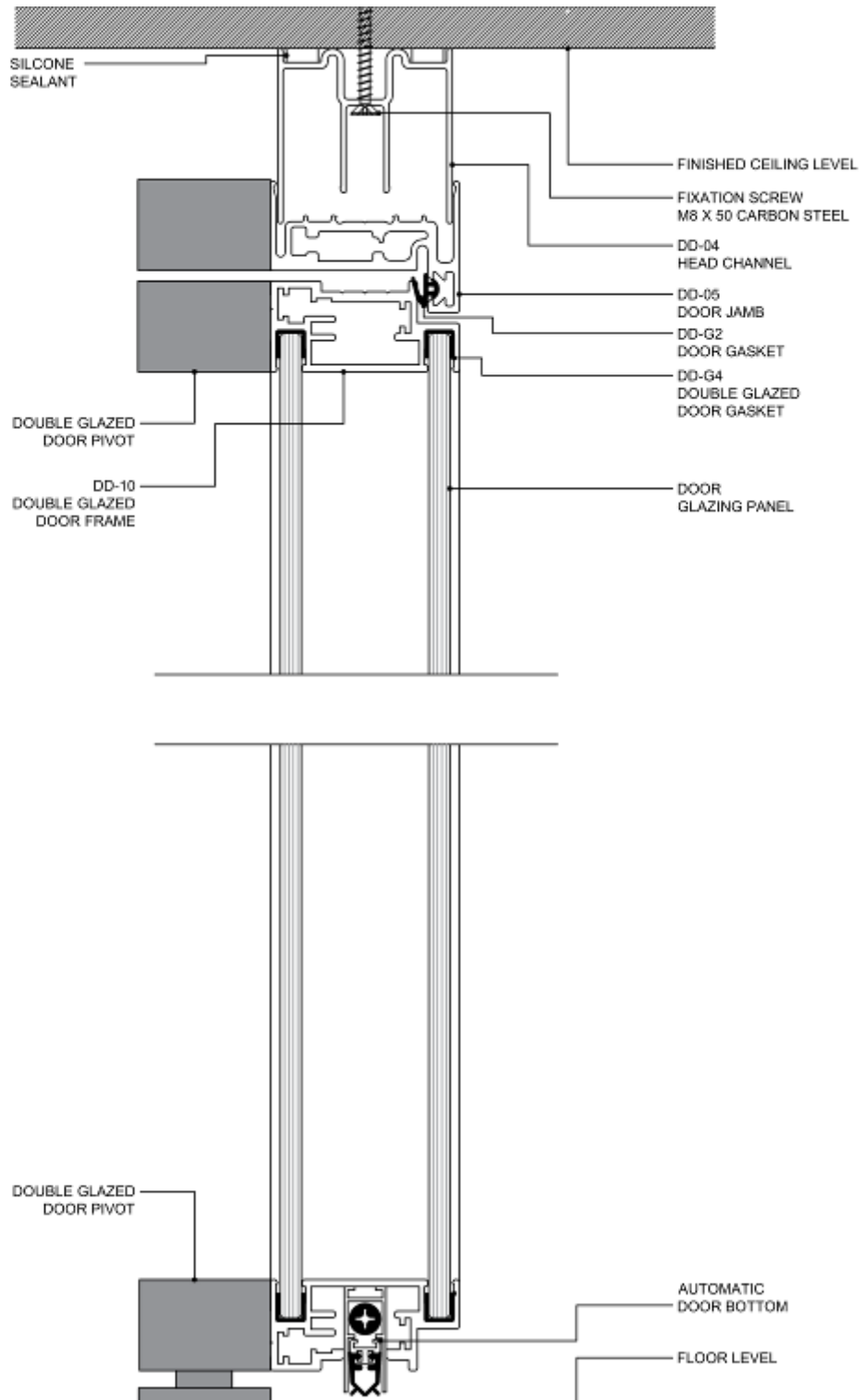
**1.4.3**

1:2 A4

06/08/2022

+202 3335 1675

WWW.CONTACT-INTERIORS.COM



**CONTACT INTERIORS**  
**DAYLIGHT2 CLASSIC**  
**DOUBLE GLAZING**

**DOUBLE GLAZED DOOR**  
**VERTICAL SECTION**

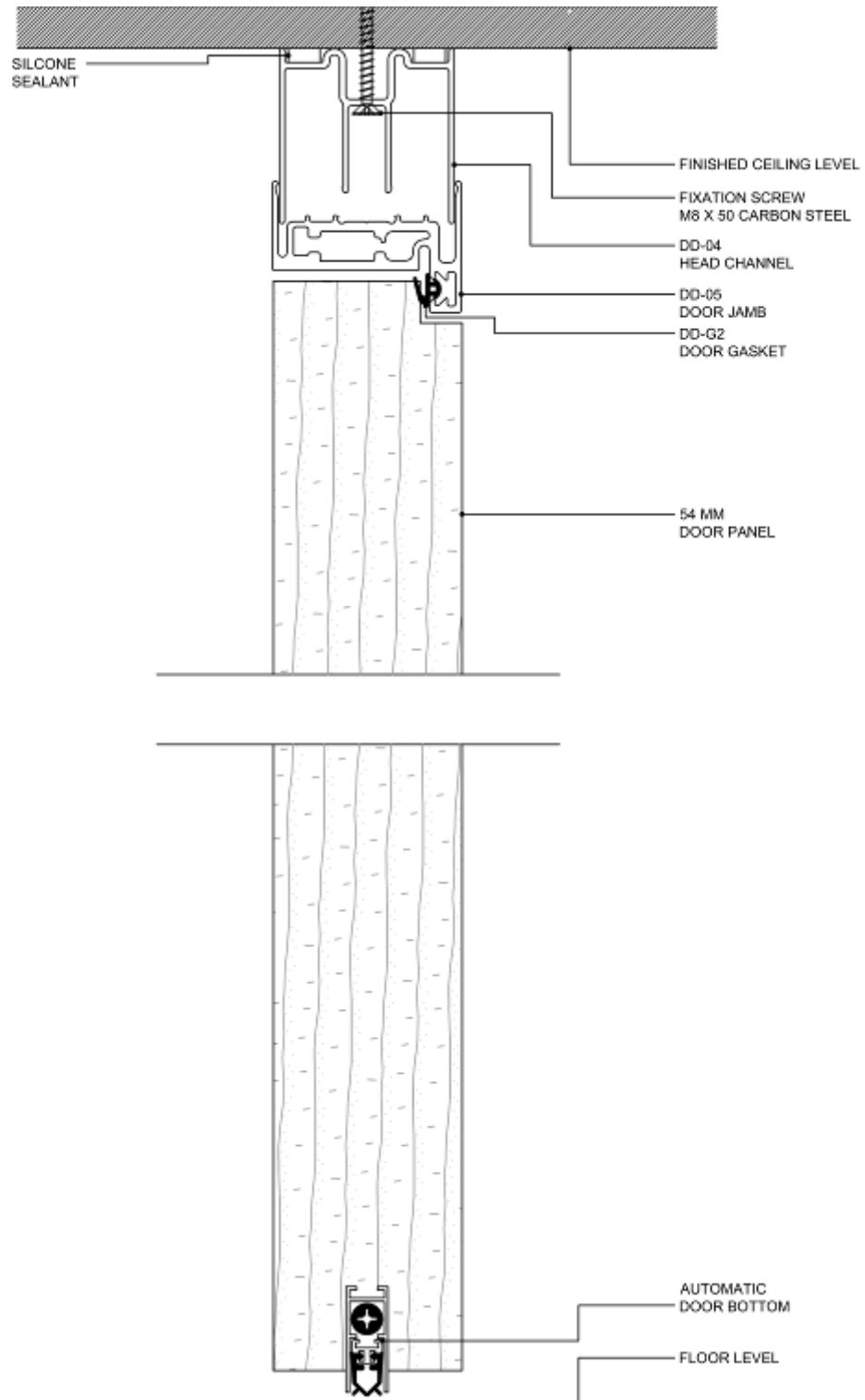
**1.4.4**  
SHEET

1:2 A4  
SCALE

06/08/2022  
ISSUED DATE

+202 3335 1675  
SUBJECT TO CHANGE WITHOUT NOTICE

WWW.CONTACT-INTERIORS.COM



**CONTACT INTERIORS**  
**DAYLIGHT2 CLASSIC**  
**DOUBLE GLAZING**

**WOOD DOOR**  
**VERTICAL SECTION**

**1.4.5**

1:2 A4

06/08/2022

+202 3335 1675

WWW.CONTACT-INTERIORS.COM



## DAYLIGHT2 CLASSIC SINGLE GLAZING

---

### 4.0 SYSTEM OVERVIEW

Daylight2 provides framed single glazing with numerous configurations and design options, offering a complete partition system for glazed and solid paneling.

Daylight2 has the following features:

- Standard profile size of 50 x 28 mm at base and 50 x 50 mm at ceiling.
- Post/Transom profile size 37 x 50 mm can be used vertically or horizontally.
- Can accommodate glass thicknesses between 10 mm - 13.52 mm.
- Doors can be double glazed or solid, 54 mm thickness.
- Can accommodate solid panels in 17 mm thick MDF, laminated in Veneer, HPL, or Melamine.
- Acoustic insulation from 31 to 38 dB.

### TECHNICAL SERVICES

Technical advice is available from our experienced team. Please contact us to arrange a visit from our sales team to assess your requirements.

### SAMPLE SPECIFICATIONS

Item	Description
Single Glazed Partition 31 dB	Daylight2® single glazed partitions by Contact Interiors, composed of 1 pane 10 mm tempered clear glass encased in Aluminium, with vertical and horizontal divisions achieved using post/transom profile. Partition thickness 50 mm. Solid panels in Veneer, HPL, or Melamine with infill rockwool insulation can be added in any configuration for the installation of power or data receptacles and signage, with total outside thickness 85 mm.
Single Glazed Partition 38 dB	Daylight2® single glazed partitions by Contact Interiors, composed of 1 pane 11.52 mm tempered laminated clear glass (5 mm + 1.52 mm PVB + 5 mm) encased in Aluminium profiles, with vertical and horizontal divisions achieved using post/transom profile. Partition thickness 50 mm. Solid panels in Veneer, HPL, or Melamine with infill rockwool insulation can be added in any configuration for the installation of power or data receptacles and signage, with total outside thickness 85 mm.
Single Glazed Door 31 dB	Single glazed door for Daylight2 partitions. Door leaf composed of 10 mm thick tempered glass panel, frameless, hung on Aluminium architrave. Door hardware as per system standard.
Solid Single Leaf Door 35 dB	Single leaf solid door for Daylight2 partitions. Door leaf composed of 8 mm thick Veneer / HPL / Melamine faced MDF on softwood and honeycomb substructure with massive wood or PVC edge banding according to selected finish. Architrave in extruded Aluminium. Door hardware as per system standard. Door thickness 54 mm.





## FRAMED SINGLE GLAZED PARTITION TECHNICAL DATA SHEET

# daylight2®

## Seamless Glazing

### DESCRIPTION

Demountable single glazed partition. Solid or glazed panels can be installed in any combination.

### STRUCTURE

- Height of floor channel: 28mm
- Width of floor channel: 50mm
- Height of ceiling channel: 50mm
- Width of ceiling channel: 50mm

### DOUBLE GLAZED PARTITION

- Single glazed partition uses a single pane of glass.
- The glass is held in extruded Aluminium sections.
- The glass is fitted without the use of silicone.
- Glass junctions are achieved using mullions and transoms in extruded Aluminium.
- Standard partition uses 10mm thick fully tempered clear glass.
- High-acoustic version uses 11.52mm thick tempered laminated glass (must be specified).

### SOLID PANELS

- Solid panels for electrical and data connectivity may be installed (must be specified).
- Solid panels are composed of 17mm thick MDF.
- Panels are hung on galvanized steel posts.

### HINGED DOORS

- Glazed doors are provided single glazed in same partition glass, frameless.
- Solid doors are provided in laminated MDF, hollow or solid core, 54mm thick.
- Door architraves are 54 mm thick.
- Doors are provided with a rubber seal encased in the door frame.
- Door hardware is as per project specifications.

### FINISHES

#### ALUMINIUM PROFILE

- Anodized or polyester powder coated finish.

#### GLASS

- Clear, fully or partially frosted.

#### SOLID DOORS AND PANELS

- Melamine laminate.
- Natural Veneer.
- High Pressure Laminate.

### DIMENSIONAL LIMITS

Partition can be installed up to 4500mm in height.

Tolerances for surfaces adjacent to the partition cannot exceed  $\pm 2$ mm.

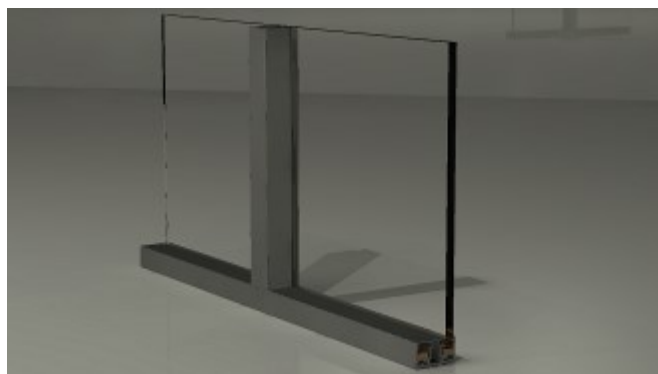
### ACOUSTICS

#### STANDARD PARTITION

- Acoustic insulation index weighted as per EN ISO 717-1.  
 $R_w (C;Ctr) = 31(-2; -4) Db$
- Sound Transmission Class as per ASTM E90. STC = 31

#### HIGH-ACOUSTIC VERSION

- Acoustic insulation index weighted as per EN ISO 717-1.  
 $R_w (C;Ctr) = 38(-2; -4) Db$
- Sound Transmission Class as per ASTM E90. STC = 38





### TIPS FOR ARCHITECTS AND DESIGNERS

- Plan for glass maneuvering on-site. Limit maximum glass panel width to 1100 mm to allow for vertical and horizontal movement (delivery) while installing.
- The minimum glass panel width is 200 mm.
- For floor to ceiling heights above 2700 mm, it is suggested to use the Daylight2 Classic system.
- Solid doors and panels in Melamine and Natural Veneer can be produced full height up to 2700 mm. Doors and panels in HPL can be produced up to 2400 mm height only, with a matching transom panel for greater heights.
- Place a 30 cm glazed or solid panel between doors on the hinge side and adjacent walls to allow for full opening of doors.

## CONTACT INTERIORS

### DAYLIGHT2

### SINGLE GLAZING

#### 2.2.1

SHEET

-

SCALE

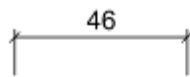
06/08/2022

ISSUED DATE

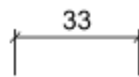
+202 3335 1675

SUBJECT TO CHANGE WITHOUT NOTICE

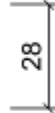
WWW.CONTACT-INTERIORS.COM



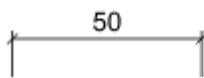
**DD-01**  
BASE CHANNEL



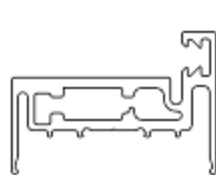
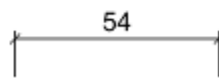
**DD-08**  
SINGLE  
GLAZING CLIP



**DD-03**  
DOUBLE GLAZING CLIP



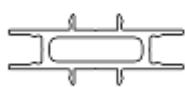
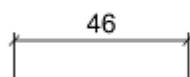
**DD-04**  
HEAD CHANNEL



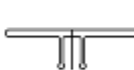
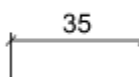
**DD-05**  
DOOR JAMB



**DD-09**  
CLIP IN SINGLE  
GLAZED DOOR STOP



**DD-13**  
TRANSOM/POST



**DD-14**  
POST CLIP-  
IN COVER

**CONTACT INTERIORS**  
**DAYLIGHT2 CLASSIC**  
**SINGLE GLAZING**

**STANDARD SYSTEM PROFILES**

**4.3.1**

1:2 A4

06/08/2022

+202 3335 1675

WWW.CONTACT-INTERIORS.COM



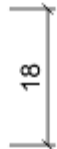
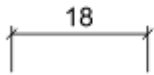
**DD-G1**  
CAPTIVE  
GLAZING BEAD



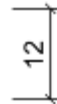
**DD-G2**  
DOOR GASKET



POLYCARBONATE  
"I"-JOINT



**DD-12**  
GLAZING  
CORNER



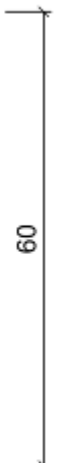
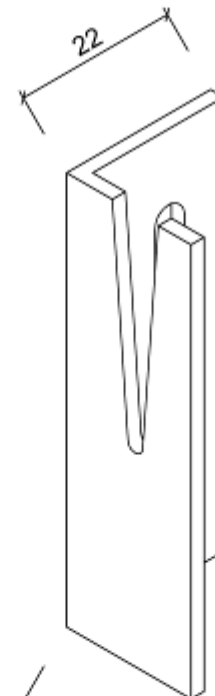
**AC-05**  
H/T  
CONNECTOR



**DD-G4**  
DOUBLE GLAZED  
DOOR GASKET



**DD-G3**  
JAMB GASKET



**AC-03**  
PANEL HANGER

**CONTACT INTERIORS**  
**DAYLIGHT2 CLASSIC**  
**SINGLE GLAZING**

**SYSTEM ACCESSORIES**

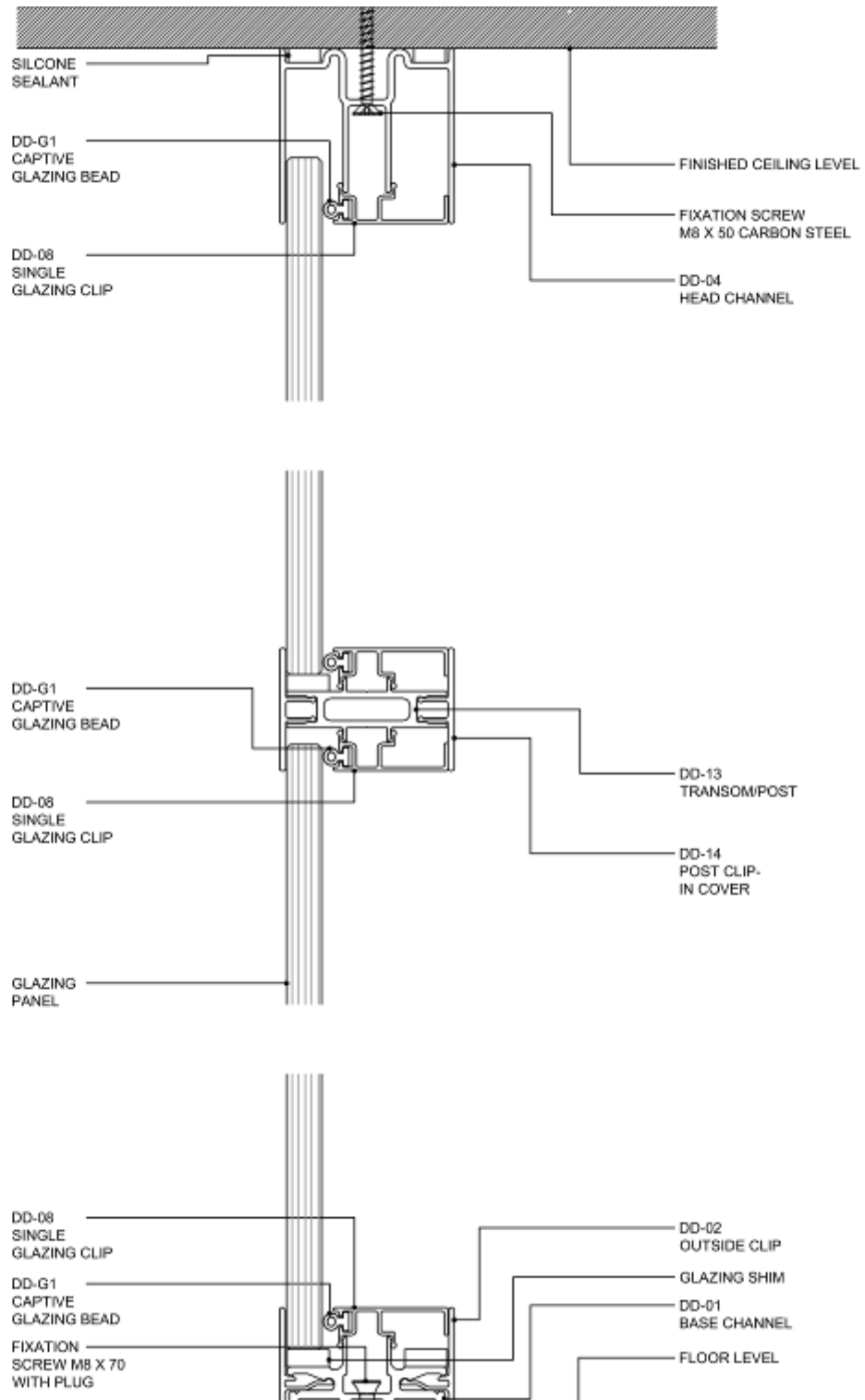
**4.3.2**  
SHEET

1:1 A4  
SCALE

06/08/2022  
ISSUED DATE

+202 3335 1675  
SUBJECT TO CHANGE WITHOUT NOTICE

WWW.CONTACT-INTERIORS.COM

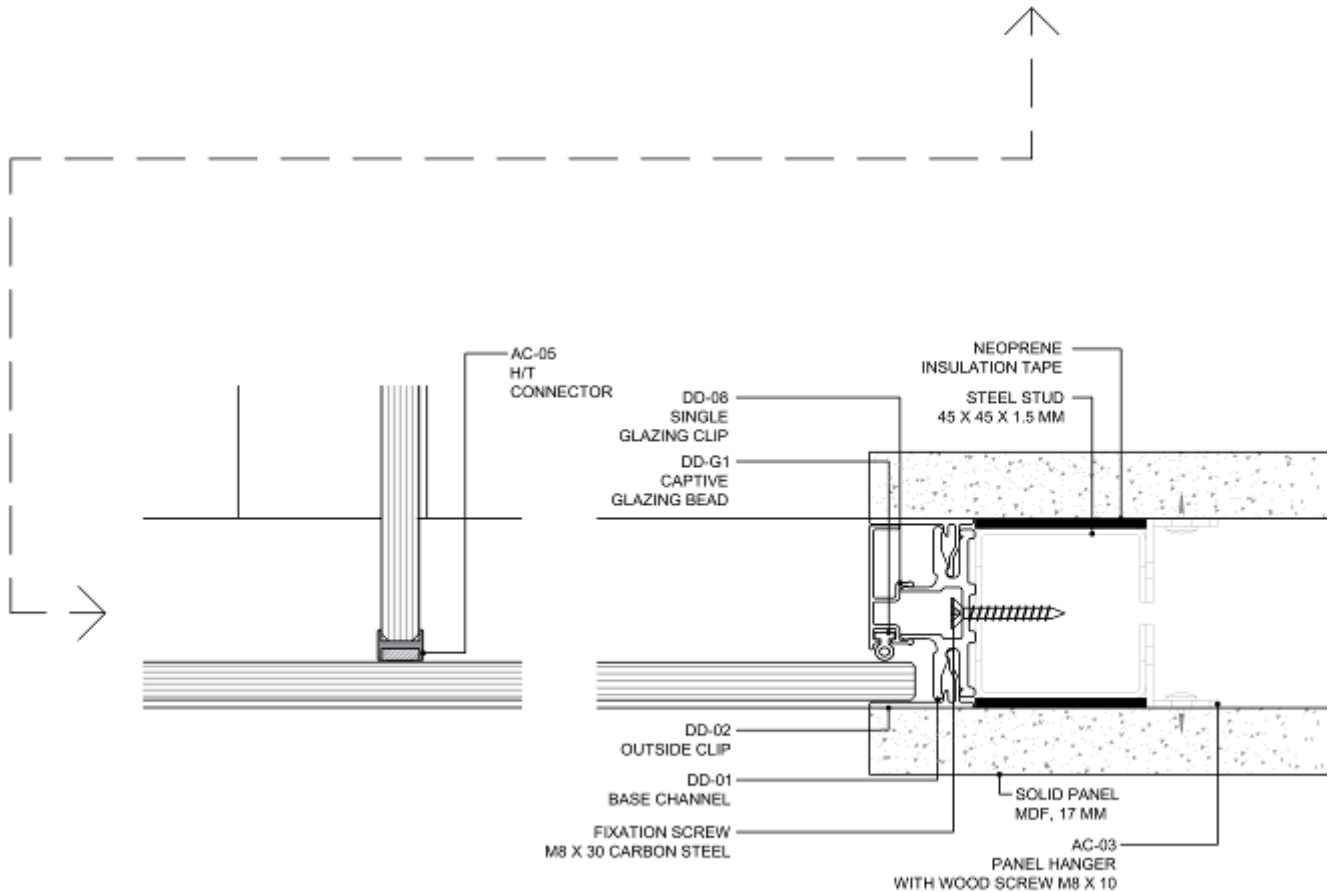
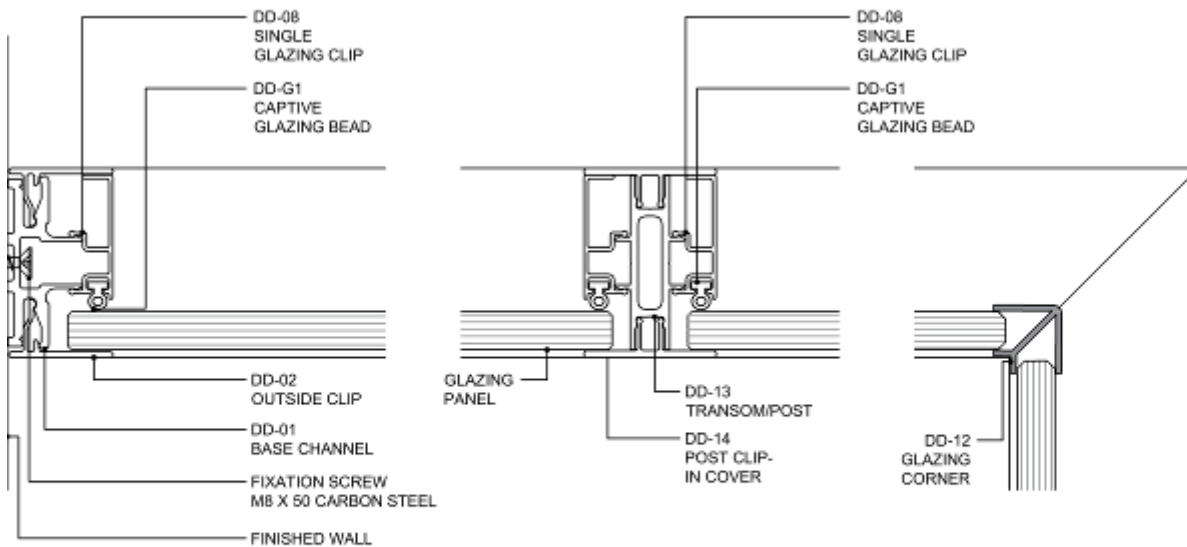

**CONTACT INTERIORS**
**DAYLIGHT2 CLASSIC**
**SINGLE GLAZING**
**SINGLE GLAZING WALL**
**VERTICAL SECTION**
**4.4.1**

1:2 A4

06/08/2022

+202 3335 1675

[WWW.CONTACT-INTERIORS.COM](http://WWW.CONTACT-INTERIORS.COM)



**CONTACT INTERIORS**  
**DAYLIGHT2 CLASSIC**  
**SINGLE GLAZING**

**4.4.2**  
SHEET

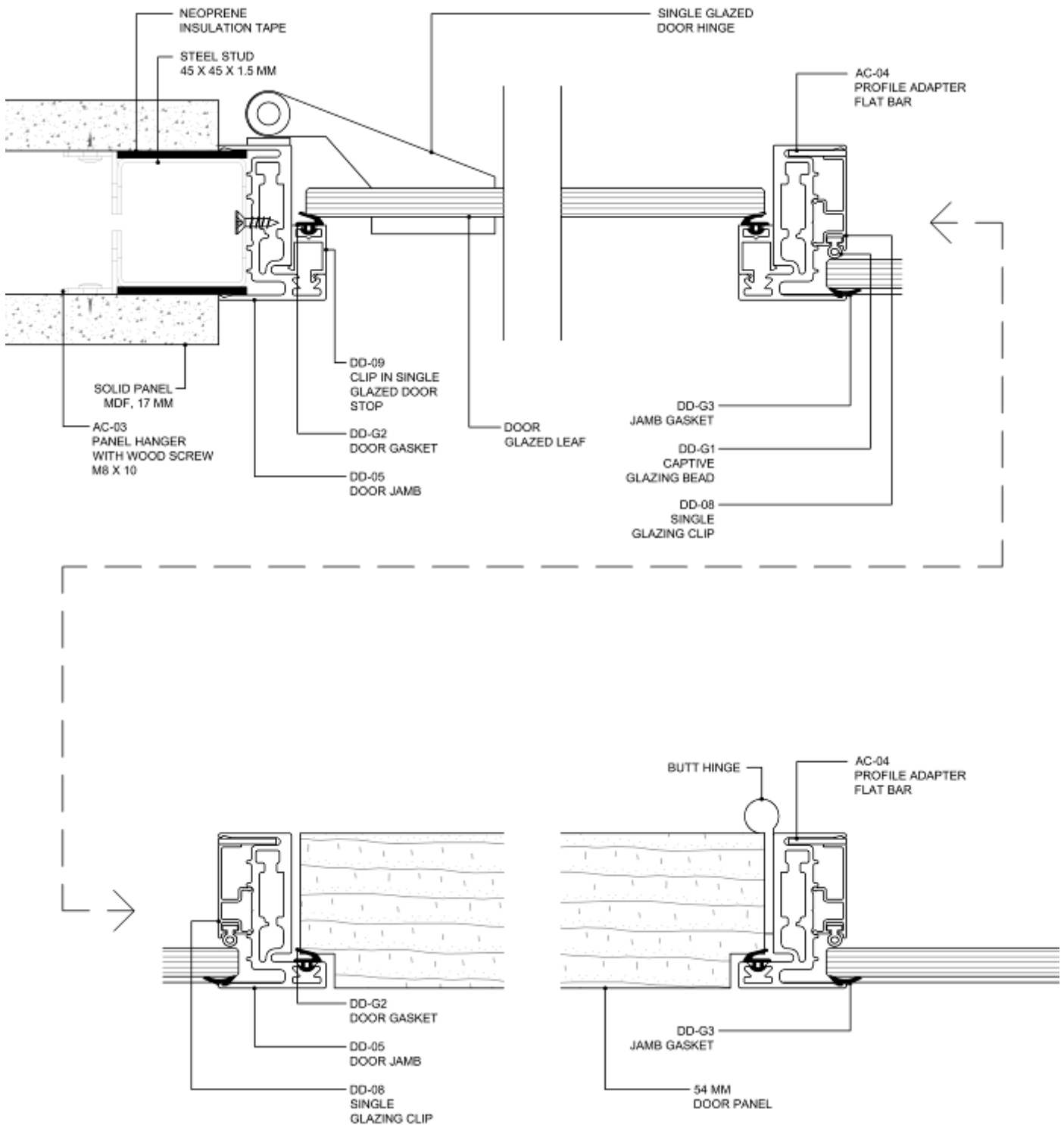
1:2 A4  
SCALE

**SINGLE GLAZING WALL**  
**HORIZONTAL SECTIONS**

06/08/2022  
ISSUED DATE

+202 3335 1675  
SUBJECT TO CHANGE WITHOUT NOTICE

WWW.CONTACT-INTERIORS.COM



**CONTACT INTERIORS**  
**DAYLIGHT2 CLASSIC**  
**SINGLE GLAZING**

**DOORS**

**HORIZONTAL SECTIONS**

**4.4.3**

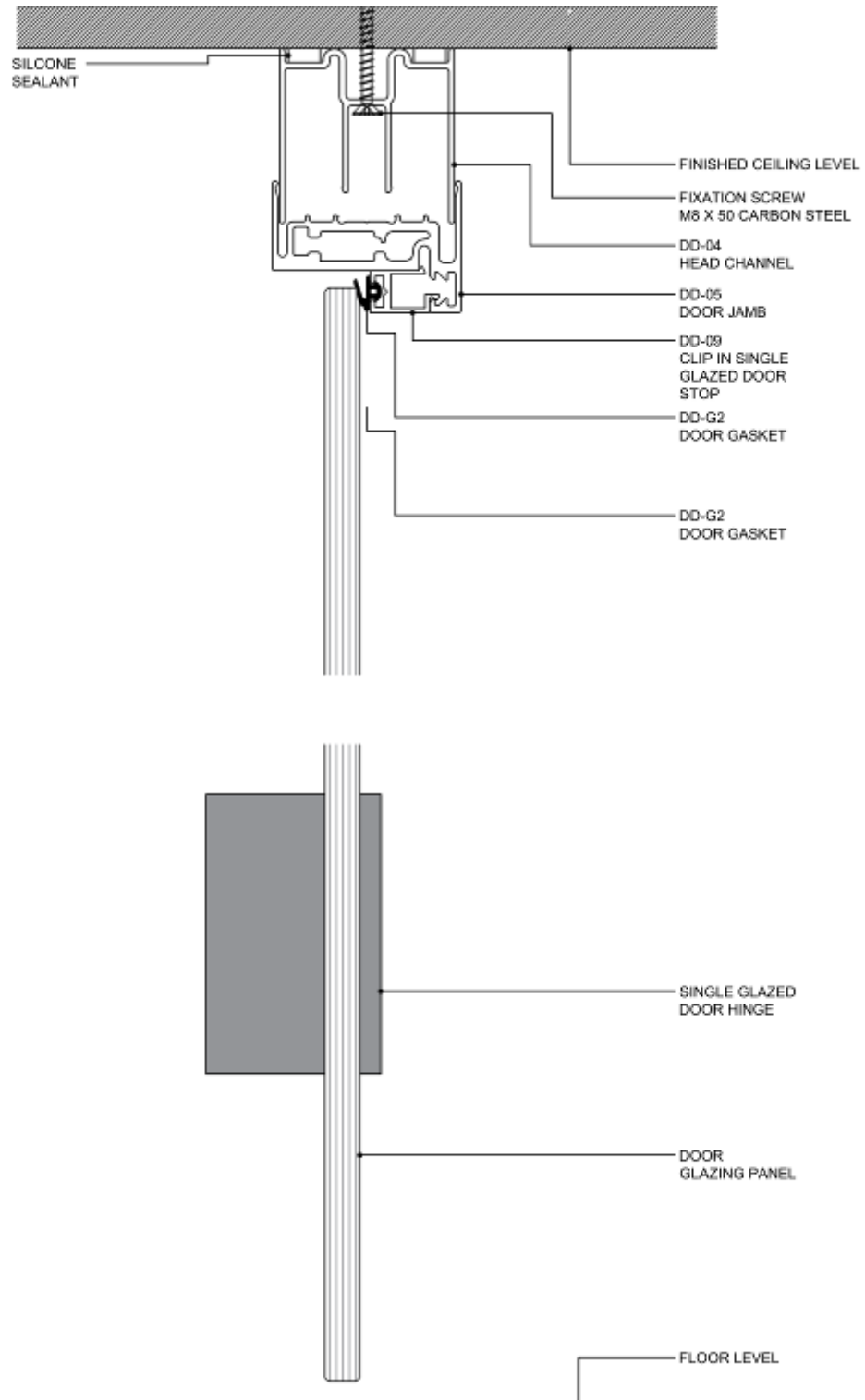
1:2 A4

06/08/2022

+202 3335 1675

WWW.CONTACT-INTERIORS.COM





**CONTACT INTERIORS**  
**DAYLIGHT2 CLASSIC**  
**SINGLE GLAZING**

**SINGLE GLAZED DOOR**  
**VERTICAL SECTION**

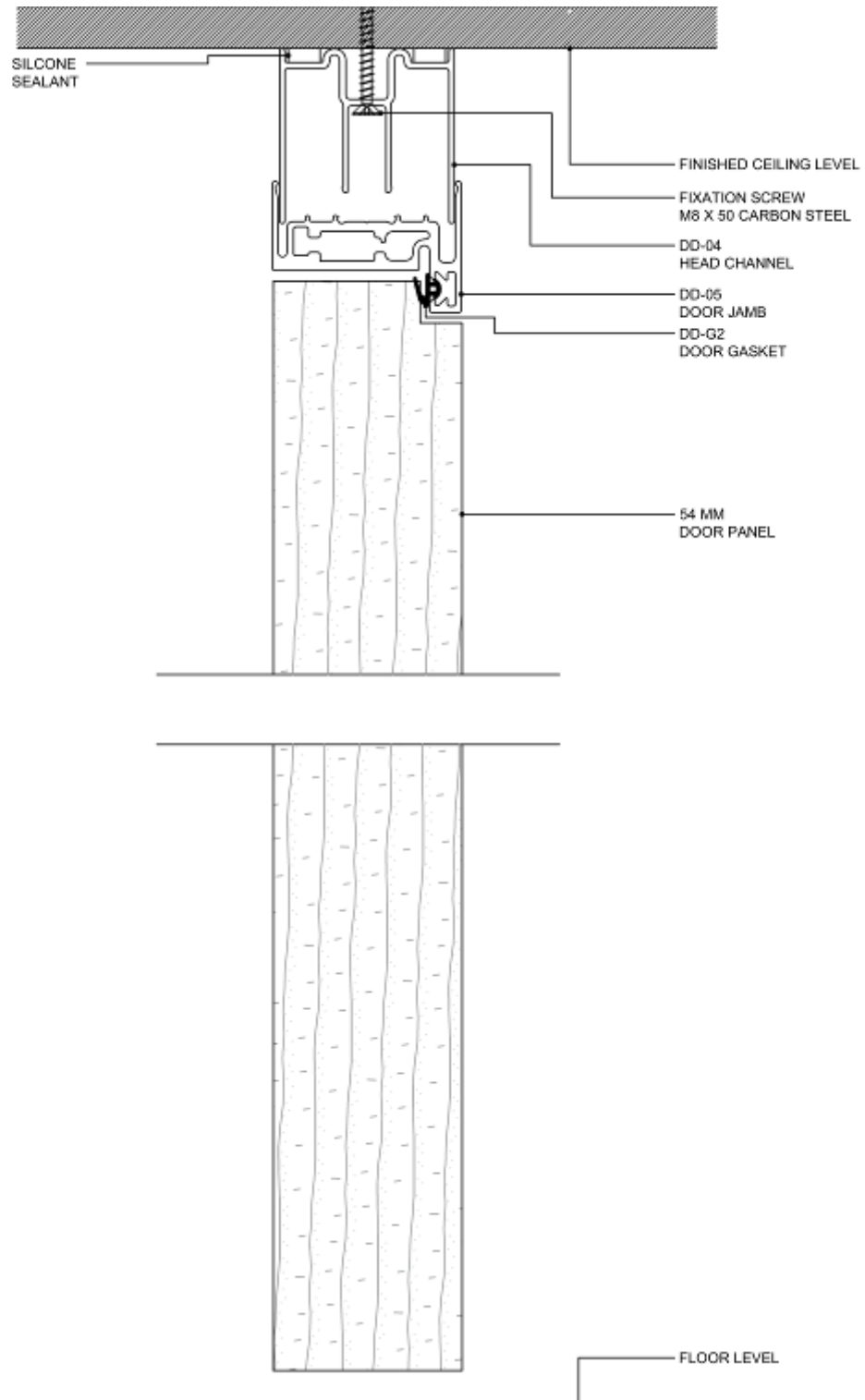
**4.4.4**  
SHEET

1:2 A4  
SCALE

06/08/2022  
ISSUED DATE

+202 3335 1675  
SUBJECT TO CHANGE WITHOUT NOTICE

WWW.CONTACT-INTERIORS.COM



**CONTACT INTERIORS**  
**DAYLIGHT2 CLASSIC**  
**SINGLE GLAZING**

**WOOD DOOR**  
**VERTICAL SECTION**

**4.4.5**

1:2 A4

06/08/2022

+202 3335 1675

WWW.CONTACT-INTERIORS.COM



All rights reserved Contact Interiors® 2023

## **CONTACT INFORMATION**

### **CONTACT INTERIORS HEAD OFFICE**


134 El Nile Street, Agouza


12411, Giza, Egypt

Telephone: +2 023335 1675

Email: [info@contact-interiors.com](mailto:info@contact-interiors.com)

**[www.contact-interiors.com](http://www.contact-interiors.com)**

 [facebook.com/contactinteriors](https://facebook.com/contactinteriors)

 [linkedin.com/company/contact-interiors](https://linkedin.com/company/contact-interiors)